



AN ISO 9001 :2015 CERTIFIED CO.

SINCE 1995

AN ISO 9001 :2015 CERTIFIED CO.

#137

# PRICE LIST

W.E.F. 01.05.2026



## ABOUT US

At **AMBAY TOOLS COMPANY**, we are dedicated to crafting exceptional hand tools that empower professionals and enthusiasts alike. With a legacy spanning over 30 years, we have established ourselves as a leader in the hand tools, Machine Tools & Vices industry, renowned for our unwavering commitment to quality, innovation, and customer satisfaction.

### OUR MISSION

Our mission is to equip individuals with the highest quality tools that enhance their productivity and enable them to tackle every task with precision and confidence. We strive to exceed expectations by delivering tools that embody durability, functionality, and ergonomic design.

### CRAFTSMANSHIP AND INNOVATION

Craftsmanship is at the heart of everything we do. Our experienced artisans combine time-tested techniques with cutting-edge technology to create hand tools that stand the test of time. We continually push the boundaries of innovation, introducing new features and designs that optimize performance and user experience.

### PRODUCT RANGE

From Hand Tools, Machine Tools Engineering Tools, Plumbing Tools, Wood Working Tools, Vices etc., our diverse range caters to professionals across various industries. Our product portfolio is a testament to our dedication to meeting the unique demands of our customers, whether they work in construction, automotive, woodworking, or any other field.

### QUALITY ASSURANCE

Quality is paramount in our approach. We adhere to stringent quality control processes throughout every stage of production, ensuring that each hand tool leaving our facility meets the highest standards of durability, accuracy, and reliability. Our commitment to excellence is underscored by certifications that attest to our dedication to quality.

### CUSTOMER-CENTRIC APPROACH

Our customers are at the core of our business. We take pride in fostering strong relationships, built on trust and reliability. Our dedicated customer support team is always ready to assist, ensuring that our customers receive the guidance they need to make informed choices.



# INDEX



**VICES**  
PG-1 TO PG-10



**BENCH DRILLING MACHINE**  
PG-11



**SURFACE PLATE & MARKING TABLE**  
PG-12 TO PG-13



**CLAMPING FIXTURE & ACCESSORIES**  
PG-14 TO PG-17



**HAMMERS**  
PG-18 TO PG-20



**SPANNERS**  
PG-21 TO PG-23



**PLIERS & WRENCHES**  
PG-24 TO PG-25



**PLUMBING TOOLS & OTHER KITS**  
PG-26 TO PG-29



**SCREW DRIVER & CARPENTRY TOOLS**  
PG-30 TO PG-33



**MASON TOOLS**  
PG-34



**GARAGE TOOLS**  
PG-35 TO PG-38



**PUNCHES & CHISELS**  
PG-39 TO PG-41



**TAP & DIE SET'S**  
PG-42



# VICES



**CODE NO 840/840S**  
HSN CODE: 82057000



**BENCH VICE DOUBLE RIB**  
FIXED BASE/SWIVEL BASE

SIZE IN INCHES	PRICE C.I.	SWIVEL BASE
3	2660.00	3320.00
3.1/2	3540.00	4280.00
4	4780.00	6040.00
4.1/2	5740.00	6840.0
5	7240.00	8920.00
6	8860.00	11100.00
8	15440.00	18140.00
10	26260.00	33720.00
12	29060.00	36640.00

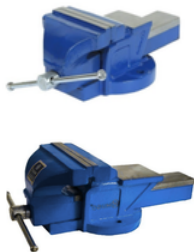
**CODE NO 841/841S**  
HSN CODE: 82057000



**BENCH VICE SINGLE RIB**  
FIXED BASE/ S.G BODY

SIZE IN INCHES	PRICE FIXED BASE	S.G BODY
2.1/2	1600.00	-----
3	2140.00	2460.00
3.1/2	2900.00	3340.00
4	3920.00	4500.00
4.1/2	4440.00	5100.00
5	5690.00	6540.00
6	6400.00	7360.00
8	11360.00	13060.00
10	19200.00	22080.00
12	21400.00	24620.00

**CODE NO 843/843S**  
HSN CODE: 82057000



**BENCH VICE ECONOMY /S.G**  
FIXED BASE/ S.G BODY

SIZE IN INCHES	PRICE FIXED BASE	PRICE FIXED BASE (S.G)
3	1920.00	2180.00
4	2840.00	3300.00
5	3980.00	4800.00
6	5280.00	6220.00
8	8760.00	10000.00
10	12400.00	16860.00
12	18400.00	20720.00
16	-----	32540.00
18	-----	41480.00

**CODE NO 844**  
HSN CODE: 82057000



**PRECISION MACHINIST BENCH VICE**

SIZE IN INCHES	PRICE FIXED BASE
4	10120.00
5	12200.00
6	17920.00

**CODE NO 805/805S**  
HSN CODE: 82057000



**BENCH VICE ALL STEEL**  
FIXED BASE/ SWIVEL BASE

SIZE IN INCHES	PRICE FIXED BASE	PRICE SWIVEL BASE
3	1660.00	2060.00
4	2120.00	2680.00
5	3080.00	4040.00
6	3940.00	5060.00
8	6240.00	7640.00
10	7940.00	-----
12	17000.00	-----

**CODE NO 845**  
HSN CODE: 82057000



**LEG VICE**

SIZE IN INCHES	PRICE FIXED BASE
4	7400.00
6	10120.00

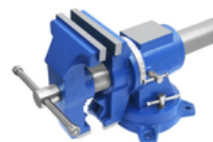
**CODE NO 839**  
HSN CODE: 82057000



**QUICK ACTION BENCH VICE**

SIZE IN INCHES	PRICE FIXED BASE
4	10360.00
5	14260.00
6	16800.00

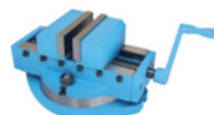
**CODE NO 887**  
HSN CODE: 82057000



**MULTIPURPOSE VICE**

SIZE IN INCHES	PRICE FIXED BASE
4	6680.00
5	7800.00
6	10600.00

**CODE NO 814S**  
HSN CODE: 84669390



**SELF CENTERING VICE**  
SWIVEL BASE/FIXED BASE

SIZE IN INCHES	PRICE	SWIVEL
4	14400.00	16440.00

**CODE NQ 800/800S**  
HSN CODE: 82057000



**TILTING & SWIVELING VICE**  
S.G BODY/C.I. BODY

SIZE IN INCHES	PRICE C.I. BODY	PRICE S.G BODY
2	-----	12680.00
3	-----	15600.00
4	18840.00	21400.00
5	22960.00	30140.00
6	28780.00	41440.00
8	51900.00	55940.00

**CODE NQ 830**  
HSN CODE: 84669390



**3 WAY TILTING & SWIVELING VICE**

SIZE IN INCHES	PRICE
3	20500.00
4	30160.00
6	52400.00

**CODE NQ 801**  
HSN CODE: 84669390



**UNIVERSAL MACHINE VICE**  
(S.G IRON BODY)

SIZE IN INCHES	PRICE
3	23600.00
4	28900.00
6	38760.00

**CODE NQ 802P/802**  
HSN CODE: 84669390



**SHAPER MACHINE VICE**  
FIXED BASE / SWIVEL BASE

SIZE IN INCHES	FIXED BASE PRICE	SWIVEL BASE
6	14280.00	16720.00
8	25720.00	31220.00
10	40840.00	49460.00
12	64240.00	73480.00
16	97200.00	105480.00

**CODE NQ 803P/803**  
HSN CODE: 84669390



**MILLING MACHINE VICE**  
FIXED BASE/ SWIVEL BASE

SIZE IN INCHES	PRICE FIXED BASE	SWIVEL BASE
4	13500.00	15560.00
5	18400.00	20860.00
6	20600.00	24400.00
8	35800.00	41780.00
10	70180.00	78500.00
12	82460.00	98260.00

**CODE NQ 803S/803PS**  
HSN CODE: 84669390



**MILLING MACHINE VICE S.G BODY**  
FIXED BASE/ SWIVEL BASE

SIZE IN INCHES	PRICE FIXED BASE	SWIVEL BASE
2	7860.00	9640.00
3	9880.00	10700.00
4	15920.00	18880.00
5	18400.00	22400.00
6	22040.00	26400.00
8	39520.00	45820.00

**CODE NQ 804/804P**  
HSN CODE: 84669390



**HYDRAULIC MACHINE VICE**  
FIXED BASE/ SWIVEL BASE

SIZE IN INCHES	PRICE FIXED BASE	SWIVEL BASE
6X200	49400.00	55000.00
6X300	52400.00	58000.00

**CODE NQ 852/852P**  
HSN CODE: 84669390



**LOCK DOWN MACHINE VICE**  
FIXED BASE/ SWIVEL BASE

SIZE IN INCHES	PRICE FIXED BASE	SWIVEL BASE
4X6	17600.00	21500.00
6X6	26920.00	32900.00
6X8	33380.00	39360.00
8X8	50020.00	61820.00
8X10	54640.00	66440.00
8X12	65840.00	77640.00
12X16	109980.00	126820.00

**CODE NQ 888/888P**  
HSN CODE: 84669390



**HEAVY DUTY PRECISION MACHINE VICE**

FIXED BASE/ SWIVEL BASE (S.G BODY)

SIZE IN INCHES	PRICE FIXED BASE	SWIVEL BASE
6	39520.00	46000.00

**CODE NQ 461TJ/461PJ**  
HSN CODE: 84669390

**CODE NQ 461TJ/461PJ**  
HSN CODE: 84669390



**MODULAR PRECISION MACHINE VICE**

TAPER JAW/PARALLEL JAW

SIZE IN INCHES	TAPER JAW	PARALLEL JAW
150X225	61500.00	54200.00
150X300	67800.00	61500.00
200X300	92200.00	85400.00
200X400	138900.00	120000.00

**CODE NQ 462**  
HSN CODE: 84669390



## TWO PIECE MODULAR MACHINE VICE

IDEAL FOR LONG WORK PIECES



SIZE IN MM	PRICE
150	65620.00
200	93060.00

**CODE NQ 463**  
HSN CODE: 84669390



## PRECISION SELF CENTERING 5 AXIS VISE

4TH & 5<sup>TH</sup> AXIS CNC MACHINING CENTRE'S



SIZE IN MM	STANDARD JAW OPENING	REVERSE JAW OPENING	PRICE
50	50	80	54180.00
50	70	100	55720.00
75	65	105	58020.00
100	80	130	64200.00
125	130	180	70560.00
150	155	205	80340.00
200	100	300	93540.00

**CODE NQ 464**  
HSN CODE: 84669390



## PRECISION WIRE EDM VICE



SIZE IN MM	PRICE
150	65400.00

**CODE NQ 465**  
HSN CODE: 84669390



## PRECISION DUAL STATION VICE

HIGH QUALITY FCD 60 BODY



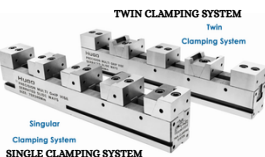
SIZE IN MM	PRICE
152X125X520	72740.00

**CODE NQ466**  
HSN CODE: 84669390



## PRECISION MULTI GRIP VICE

SERRATED GUIDE WAYS



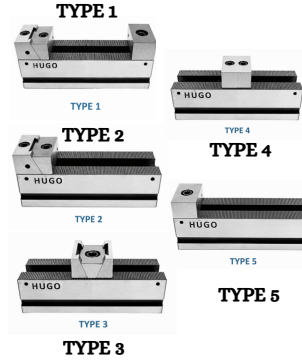
SIZE IN MM	PRICE
70X340	54000.00
70X540	84000.00
70X600	88000.00

**CODE NQ 467C**  
HSN CODE: 84669390



## COMPACT PRECISION MULTI GRIP VICE

SERRATED GUIDE WAYS



JAW WIDTH	TYPES	PRICE
70	TYPE 1	32940.00
70	TYPE 2	68860.00
70	TYPE 3	26820.00
70	TYPE 4	26160.00
70	TYPE 5	58380.00

**CODE NQ 468**  
HSN CODE: 84669390



## TOE CLAMP

WITH REVERSIBLE JAW



SIZE IN MM	PRICE
42	6860.00
58	8580.00

**CODE NQ469**  
HSN CODE: 84669390



## MICRO EDGE CLAMP

WITH HARDENED JAWS



Application of Micro Edge Clamp

SIZE IN MM	STOPPER	CLAMP
30	6820.00	7460.00
40	8700.00	9180.00

**CODE NQ 470SQ**  
HSN CODE: 84669390



## QUICK POINT CLAMPING PLATE

WITH CLAMPING EDGE & MOUNTING BORES



SIZE IN MM	PRICE
52 MM	37800.00
96MM	52800.00
COMBO 52 & 96MM	70080.00

**CODE NQ 471CR**  
HSN CODE: 84669390



## QUICK POINT CLAMPING PLATE (CIRCULAR)

WITH CLAMPING EDGE & MOUNTING BORES



SIZE IN MM	PRICE
52 MM	45600.00
96MM	60000.00
COMBO 52 & 96MM	74400.00

**CODE NQ 472WC**

HSN CODE: 84669390



**NEW**

**WEDGE CLAMP**

WIDTH OF JAWS	SINGLE WEDGE PRICE	TWIN WEDGE PRICE
42	4620.00	4860.00
52	5050.00	5280.00
70	5730.00	5970.00

**CODE NQ 478**

HSN CODE: 84669390



**NEW**

**TOMBSTONE**

COMPATIBLE WITH **PRECISION SELF CENTERING**  
(5 AXIS) 50,75 & 100MM

SIZE IN MM	ALUMINIUM PRICE	ALLOY STEEL PRICE
220X250	126600.00	722160.00

**CODE NQ 473S**

HSN CODE: 84669390



**NEW**

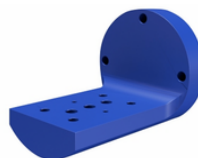
**STUD FOR QUICK POINT CLAMPING**

**PLATE**

SIZE IN MM	PRICE
52X52	980.00
96X96	1180.00

**CODE NQ 479L**

HSN CODE: 84669390



**NEW**

**L TYPE TOMBSTONE**

COMPATIBLE WITH **PRECISION SELF CENTERING**  
(5 AXIS)

SIZE IN MM	COMPATIBLE ITEMS	PRICE	
160X200	CODE NQ 463	50X80	96620.00
		50X100	
		75X105	
	CODE NQ 4708Q	52X52	
200X275	CODE NQ 463	100X130	100800.00
		125X180	
	CODE NQ 4708Q	52X52	
		96X96	

**CODE NQ474HR**

HSN CODE: 84669390



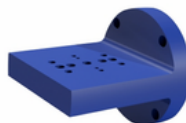
**NEW**

**HEIGHT RISER BLOCK**

SIZE IN MM	PRICE
50	31920.00
75	36240.00
100	37800.00
125	42000.00
150	54000.00

**CODE NQ 480T**

HSN CODE: 84669390



**NEW**

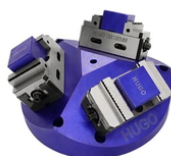
**T TYPE TOMBSTONE**

COMPATIBLE WITH **PRECISION SELF CENTERING**  
(5 AXIS)

SIZE IN MM	COMPATIBLE ITEMS	PRICE	
160X200	CODE NQ 463	50X80	105380.00
		50X100	
		75X105	
	CODE NQ 4708Q	52X52	
200X275	CODE NQ 463	100X130	109100.00
		125X180	
	CODE NQ 4708Q	52X52	
		96X96	

**CODE NQ 475P**

HSN CODE: 84669390



**NEW**

**PYRAMID**

COMPATIBLE WITH **PRECISION SELF CENTERING**  
(5 AXIS) 50,75 & 100MM

SIZE IN MM	PRICE
100	78000.00
150	84000.00

**CODE NQ 481Y**

HSN CODE: 84669390



**NEW**

**Y TYPE TOMBSTONE**

COMPATIBLE WITH **PRECISION SELF CENTERING**  
(5 AXIS)

ALLOY STEEL ALUMINIUM

SIZE IN MM	COMPATIBLE ITEMS	PRICE	PRICE	
160X200	CODE NQ 463	50X80	111280.00	113460.00
		50X100		
		75X105		
	CODE NQ 4708Q	52X52		
200X275	CODE NQ 463	100X130	115650.00	120000.00
		125X180		
	CODE NQ 4708Q	52X52		
		96X96		

**CODE NQ 476TS**

HSN CODE: 84669390



**NEW**

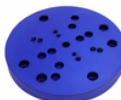
**QUICK POINT TOMBSTONE**

COMPATIBLE WITH **PRECISION SELF CENTERING**  
(5 AXIS) 50,75 & 100MM CLAMPING CIRCULAR PLATE INCLUDED

SIZE IN MM	ALUMINIUM PRICE	ALLOY STEEL PRICE
220X240	135300.00	130930.00

**CODE NQ 477**

HSN CODE: 84669390



**NEW**

**ADAPTOR PLATE**

COMPATIBLE WITH **PRECISION SELF CENTERING**  
(5 AXIS) 50,75 & 100MM

SIZE IN MM	PRICE ALUMINIUM	PRICE H/R
160MM	27720.00	27280.00
220MM	37560.00	37060.00

**CODE NO. 835V**

HSN CODE: 84669390

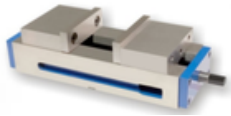


**PRECISION TILT LOCK MACHINE VICE**

SIZE IN INCHES	PRICE FIXED BASE
6X8	31860.00

**CODE NO. 835CV**

HSN CODE: 84669390

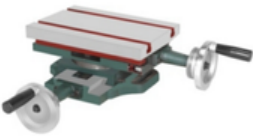


**SELF CENTERING TILT LOCK MACHINE VICE**

SIZE IN INCHES	PRICE FIXED BASE
6X8	35200.00

**CODE NO. 808**

HSN CODE: 84669390



**COMPOUND SLIDING TABLE**

SIZE IN INCHES	PRICE FIXED BASE
6X6	12840.00
8X8	16600.00
10X10	20880.00
12X8	28880.00
12X12	32220.00
12X20	60300.00
16X16	74320.00

**CODE NO. 808S**

HSN CODE: 84669390



**SINGLE SLIDING TABLE**

SIZE IN INCHES	PRICE FIXED BASE
6X6	8300.00
8X8	9720.00

**CODE NO. 808VS**

HSN CODE: 84669390



**VERTING SLIDING TABLE**

FIXED BASE/ SWIVEL BASE

SIZE IN INCHES	PRICE FIXED BASE	SWIVEL BASE
5X4	12980.00	17160.00

**CODE NO. 821**

HSN CODE: 84669390



**UNIVERSAL COMPOUND VICE**

(S.G IRON BODY)

SIZE IN INCHES	PRICE
5	20300.00

**CODE NO. 853**

HSN CODE: 84669390



**SELF CENTERING SHAFT VICE**

SIZE IN INCHES	PRICE
10-80	34540.00
50-150	57980.00

**CODE NO. 902ST**

HSN CODE: 84669390



**SWIVEL ANGLE TABLE**

SIZE IN INCHES	PRICES
5X6	11600.00
6X8	14360.00
8X10	22620.00
10X12	33340.00
12X15	54880.00

**CODE NO. 903T**

HSN CODE: 84669390



**TILTING TABLE**

SIZE IN INCHES	PRICES
5X7	15260.00
7X10	20920.00
10X15	39600.00

**CODE NO. 904UT**

HSN CODE: 84669390



**UNIVERSAL TILTING TABLE**

SIZE IN INCHES	PRICES
4X5	19140.00
6X8	32740.00
8X10	42960.00

**CODE NO. 905TPA**

HSN CODE: 84669390



**TWO PIECE ADJUSTABLE MILLING VICE**

SIZE IN INCHES	PRICE
6	16760.00
8	23500.00

**CODE NO. 482**

HSN CODE: 84669390



**UNIVERSAL TILTING INDEXING DEVICE**

SIZE IN INCHES	PRICE
4	68040.00

**CODE NO 811/811D**

HSN CODE: 84669390



**ROTARY MILLING TABLE**

HORIZONTAL & VERTICAL WITHOUT/WITH INDEXING DEVICE

SIZE IN INCHES	PRICE WITHOUT I/D	PRICE WITH I/D
6	18700.00	26560.00
8	23380.00	31660.00
10	30060.00	38320.00
12	48620.00	59200.00
15	71500.00	82946.00
18	129640.00	141840.00
20	138820.00	151280.00
24	165000.00	178860.00

**CODE NO 898**

HSN CODE: 82057000



**INDEXING MILLING FIXTURE**

HORIZONTAL & VERTICAL

CHUCK SIZE	WITH TAIL STOCK	WITH CHUCK & W/O TAIL STOCK
80,100,125	74360.00	55980.00
160	98840.00	74340.00
200	107600.00	82220.00

**CODE NO 815/815D**

HSN CODE: 84669390



**ROTARY MILLING TABLE**

HORIZONTAL WITHOUT & WITH INDEXING DEVICE

SIZE IN INCHES	PRICE WITHOUT I/D	PRICE WITH I/D
6	16840.00	24120.00
8	20100.00	27360.00
10	22060.00	34080.00
12	42060.00	52620.00
15	70260.00	80380.00
18	120660.00	133480.00
20	129580.00	142000.00

**CODE NO 485**

HSN CODE: 84669390



**PRECISION TILTING ROTARY TABLE**

SIZE IN INCHES	PRICE
6	38780.00
8	65520.00

**CODE NO 848**

HSN CODE: 84669390



**DIVIDING HEAD WITH COMPLETE GEAR SET**

SIZE IN INCHES	PRICE
4.1/2	53560.00
5.1/2	68640.00
6.1/2	79080.00
7.1/2	98880.00

**CODE NO 896**

HSN CODE: 82057000

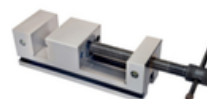


**PRECISION SCREWLESS VICE**

SIZE IN INCHES	PRICE
2	7700.00
3	9900.00
4	18040.00
6	50400.00

**CODE NO 897**

HSN CODE: 82057000



**PRECISION GRINDING VICE**

SIZE IN INCHES	PRICE
2	10780.00
3X4	16400.00
4X4	22640.00
4X5	24800.00
6	63000.00

**CODE NO 483U**

HSN CODE: 84669390



**UNIVERSAL DIVIDING HEAD**

FITTED WITH 200MM TRU CHUCK

SIZE IN INCHES	PRICE
8	154780.00

**CODE NO 898**

HSN CODE: 82057000



**PRECISION SINE VICE**

SIZE IN INCHES	PRICE
3	34120.00
4	41060.00

**CODE NO 484**

HSN CODE: 84669390



**PRECISION ROTARY MILLING TABLE**

HORIZONTAL & VERTICAL

SIZE IN INCHES	PRICE
6	31590.00
8	39500.00

**CODE NO 898S**

HSN CODE: 82057000



**PRECISION SINE VICE-SCREWLESS**

SIZE IN INCHES	PRICE
3	37400.00
4	43640.00

**CODE NO 813/813S**

HSN CODE: 82057000



**DRILL VICE HEAVY DUTY**

C.I. BODY/S.G BODY

SIZE IN INCHES	PRICE C.I.	PRICE S.G
2	-----	1980.00
3	2980.00	3360.00
4	4000.00	4200.00
5	5600.00	6220.00
6	7700.00	8700.00
8	12880.00	15380.00
10	-----	23940.00
12	-----	34340.00

**CODE NO 860/860S**

HSN CODE: 82057000



**DRILL VICE EXTRA HEAVY DUTY**

S.G BODY

SIZE IN INCHES	PRICE S.G
4	5240.00
6	8880.00

**CODE NO 825S**

HSN CODE: 82057000



**DRILL VICE COMMERCIAL DUTY**

S.G BODY

SIZE IN INCHES	PRICE S.G
3	2020.00
4	2940.00
5	4140.00
6	4920.00

**CODE NO 826**

HSN CODE: 82057000



**PRECISION DRILL VICE**

SIZE IN INCHES	PRICE
3	4400.00
4	6060.00
5	10620.00
6	16000.00

**CODE NO 827**

HSN CODE: 82057000



**PRECISION UNIGRIP VICE**

SIZE IN INCHES	PRICE
3	4040.00
4	5740.00
5	8640.00
6	9920.00

**CODE NO 827U**

HSN CODE: 82057000



**3 WAY PRECISION UNIGRIP VICE**

SIZE IN INCHES	PRICE
4	6140.00

**CODE NO 899**

HSN CODE: 82057000



**ARMATURE DRILL VICE**

SIZE IN INCHES	PRICE
3	6840.00
4	5480.00

**CODE NO 900**

HSN CODE: 82057000



**SELF CENTERING CORNER WELDNG VICE**

SIZE IN INCHES	PRICE
4	5180.00

**CODE NO 858/858H**

HSN CODE: 82057000



**WOOD WORKING VICE**

COMMERCIAL DUTY/ HEAVY DUTY

SIZE IN INCHES	PRICE COMMERCIAL	HEAVY DUTY
6	1980.00	3320.00
7	2320.00	4300.00
8	2720.00	7300.00
9	3240.00	7680.00
10	4100.00	-----
12	5540.00	-----

**CODE NO 858QR**

HSN CODE: 82057000



**WOOD WORKING VICE QUICK RELEASE**

SIZE IN INCHES	PRICE
7	5260.00
8	8120.00
9	10780.00

**CODE NO 828 S**

HSN CODE: 82057000



**PIPE VICE OPEN TYPE-S.G BODY**

SIZE IN INCHES	PRICE
1/4X2	3620.00
1/4X3	5460.00
1/4X4	6840.00

**CODE NQ 828**

HSN CODE: 82057000



**PIPE VICE OPEN TYPE-C.I. BODY**

SIZE IN INCHES	PRICE
1/8X1/4	2360.00
1/4X2	3360.00
1/4X3	5340.00
1/4X4	6500.00
2X6	14440.00
2X8	29860.00
2X10	71860.00

**CODE NQ 836**

HSN CODE: 82057000



**HAND VICE**

SIZE IN INCHES	PRICE
3	180.00
4	246.00
5	290.00
6	360.00
8	620.00

**CODE NQ 829**

HSN CODE: 82057000



**PIPE VICE OPEN TYPE-FABRICATED STEEL**

SIZE IN INCHES	PRICE
2	4460.00
3	4860.00
4	10080.00

**CODE NQ 837**

HSN CODE: 82057000



**DRAW VICE**

SIZE IN INCHES	PRICE
6	1200.00
8	1700.00
10	2600.00
12	3060.00

**CODE NQ 831**

HSN CODE: 82057000



**PIPE VICE SQUARE PILLAR**

SIZE IN INCHES	PRICE
1.1/2	1390.00
2	1500.00
3	2600.00
4	3390.00
6	6950.00
8	11140.00
12	19600.00

**CODE NQ 818**

HSN CODE: 82057000



**BABY VICE ORDINARY**

SIZE IN MM	PRICE
30	300.00
40	310.00
50	336.00
60	400.00
75	480.00
100	610.00

**CODE NQ 833**

HSN CODE: 82057000



**SELF LOCKING PIPE VICE**

SIZE IN INCHES	PRICE
1.1/2	1400.00
2	1880.00
2.1/2	2480.00
3.1/2	3980.00
4.1/2	5500.00
6	13180.00

**CODE NQ 818D/818DS**

HSN CODE: 82057000



**BABY VICE WITH CLMAP -DELUXE MODEL**

CLAMP TYPE /CLAMP SWIVEL

SIZE IN MM	PRICE	PRICE SWIVEL
30	400.00	800.00
40	500.00	840.00
50	520.00	900.00
60	740.00	1320.00
75	1040.00	1840.00
100	2000.00	-----

**CODE NQ 834**

HSN CODE: 82057000



**CHAIN PIPE VICE**

SIZE IN INCHES	PRICE
2	920.00
3	1300.00
4	1880.00
6	3520.00
8	4880.00

**CODE NQ867DF**

HSN CODE: 82057000



**TAP HANDLE-DROP FORGED**

SIZE	PRICE
1/4	300.00
3/8	360.00
1/2	410.00
3/4	560.00
1	840.00

**CODE NO 881DF/SG**

HSN CODE: 82057000



**G-CLAMP HEAVY DUTY**

DROP FORGED/S.G IRON

SIZE IN MM	PRICE D/F	PRICE S.G
50	340.00	280.00
75	520.00	300.00
100	740.00	360.00
150	1180.00	540.00
200	1620.00	740.00
250	2940.00	1040.00
300	3520.00	1240.00

**CODE NO 905A**

HSN CODE: 82058020



**ANVIL**

SIZE IN KGS.	PRICE
5	1500.00
10	3080.00
15	4620.00
20	5380.00
25	6720.00
50	13440.00
75	20160.00
100	26880.00
150	47040.00

**CODE NO 882 F**

HSN CODE: 82057000



**G-CLAMP FORGED STEEL**

SIZE IN MM	PRICE
350	3940.00
400	4420.00
450	6140.00
600	8200.00

**CODE NO 906SB**

HSN CODE: 82055930



**SWAGE BLOCK**

SIZE IN INCHES	PRICE
12X12X4	15300.00
12X12X5	19500.00
14X14X5	25500.00

**CODE NO 889 DF**

HSN CODE: 82057000



**BEARING PULLER DROP FORGED**

DOUBLE HOLE

SIZE IN INCHES	PRICE 2 LEG	PRICE 3 LEG	PRICE 3LEG EXTRA HEAVY
3	360.00	380.00	460.00
4	480.00	500.00	580.00
6	720.00	740.00	900.00
8	980.00	1000.00	1200.00
10	1320.00	1360.00	1640.00
12	1580.00	1620.00	1940.00

**CODE NO 907**

HSN CODE: 82055930



**TONGS**

SIZE IN INCHES	PRICE
12	400.00
14	480.00
18	720.00
24	980.00

**CODE NO 890 F**

HSN CODE: 82057000



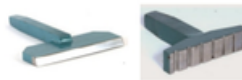
**BEARING PULLER DROP FORGED**

FORGED STEEL

SIZE IN INCHES	PRICE
14	2220.00
16	2540.00
18	2860.00
20	3340.00
24	4340.00

**CODE NO 908H/908GR**

HSN CODE: 82055930



**STAKES (HATCHET & GROOVING)**

SIZE IN INCHES	PRICE
300X100	4800.00
300X200	4800.00

**CODE NO 909**

HSN CODE: 90318000



**SINGLE PLATE WITH MAGNETIC CHUCK**

SIZE IN INCHES	LENGTH MM	WIDTH MM	PRICE
6X4	150	100	48060.00
6X6	150	150	49680.00
8X6	200	200	50760.00

**CODE NQ 910**

HSN CODE: 90318000



**MAGNETIC ANGLE PLATE**

LENGTH MM	WIDTH MM	HEIGHT MM	PRICE
150	180	95	54000.00
200	180	95	71880.00

**CODE NQ 911**

HSN CODE: 90318000



**SOCKET SET**

1/2" SQUARE DRIVE

DESCRIPTIONS	PRICE
24 PCS SET	4800.00
28 PCS SET	5200.00
32 PCS SET	5600.00

**CODE NQ 912**

HSN CODE: 8201



**PIPE BENDING MACHINE**

FABRICATION LINE TO BEND PIPE

SIZE IN MM	PRICE
1/2"-3/4"-1"-1.1/4"	15900.00
1.1/2"-2"	27000.00

**CODE NQ 913AP**

HSN CODE: 8201



**ARBOR PRESS**

RECOMMENDED FOR STAKING, RIVETING, INSTALLING, CONFIGURING & REMOVING BEARINGS & OTHER SMALLER JOBS

SIZE	DIA. OF SCREW IN MM	DIA. OF WHEEL IN MM	BASE TO GUIDE IN MM	PRICE
1	138	31	275	13800.00
2	150	34	300	17940.00
3	169	38	338	23240.00
4	188	44	375	33120.00
5	275	50	525	52440.00

**CODE NQ 914HP**

HSN CODE: 8201



**HYDRAULIC PIPE BENDER WITH HINGED FRAME**

SIZE IN INCH	PRICE
3/8-1	25300.00
1/2-2	55300.00
1/2-3	77000.00
1-4	161700.00
2-6	189200.00

**CODE NQ 915F**

HSN CODE: 8466



**FLY PRESS**

EXTRA HEAVY CASTING BODY

SIZE	DIA. OF SCREW IN MM	DIA. OF WHEEL IN MM	BASE TO GUIDE IN MM	PRICE
1	38	400	138	14940.00
2	44	450	150	19320.00
3	44	500	163	26220.00
4	50	550	175	35200.00
5	56	600	188	40260.00
6	63	650	200	51700.00
8	69	750	225	80500.00
10	78	850	288	112940.00

**CODE NQ 916G**

HSN CODE: 84603990



**MOTORIZED PEDESTRIAL BENCH GRINDER**

GRINDING APPLICATIONS

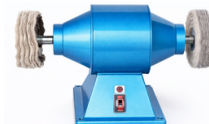
SIZE IN INCHES	CAP.	WHEEL SIZE	WT. (IN KGS.)	PRICE
8	0.5.H.P.	8X1/4"	90-100	39000.00
10	1 H.P.	10X1"	100-115	58000.00
12	2.0H.P.	12X1"	115-125	71500.00
14	3.0 H.P.	14X1.1/2"	125-140	115000.00
14	5.0 H.P.	14X2"	140-160	145000.00
16	7.5 H.P.	16X2"	160-190	165000.00

**CODE NQ 917BG/917PL**

HSN CODE: 84603990



BENCH GRINDER



POLISHER

**MOTORIZED BENCH GRINDER & POLISHER**

GRINDING & POLISHING APPLICATIONS

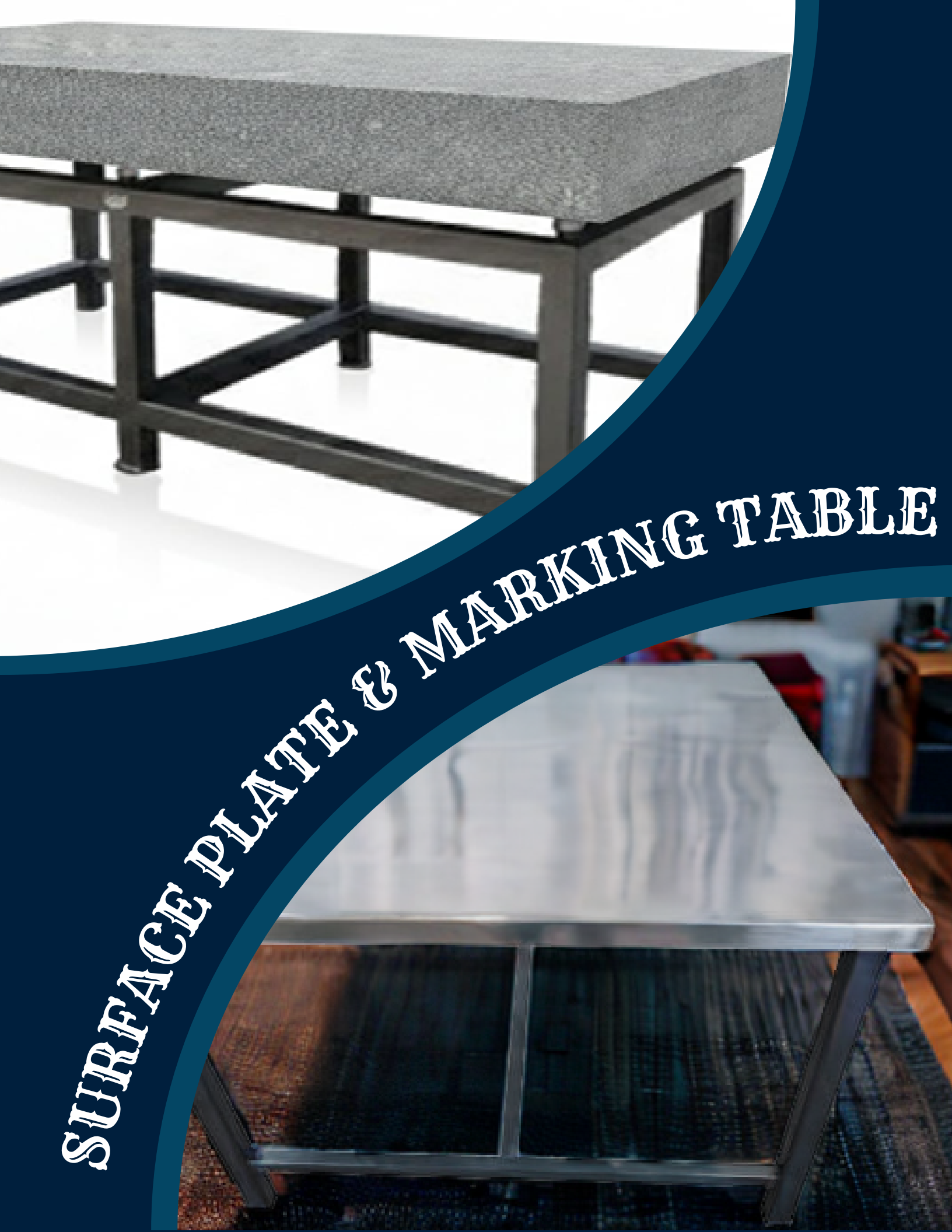
SIZE IN INCHES	CAP.	WHEEL SIZE GRINDER	PRICE GRINDER	PRICE POLISHER
4	0.10 H.P	4X3/4"	7500.00	7800.00
6	0.20 HP	6X3/4"	11200.00	11600.00
8	0.50 HP	8X3/4"	14000.00	14400.00
8	0.75 HP	8X1"	17100.00	17500.00
10	1 H.P.	10X1"	19750.00	20100.00
10	1.50 HP	10X1"	25600.00	26200.00
12	2.0H.P.	12X1"	37000.00	37600.00
12	3.00 HP	12X1.1/2"	50500.00	51400.00
14	3.0 H.P.	14X1.1/2"	69000.00	-----
14	5.0 H.P.	14X2"	80000.00	66000.00
-----	7.5 H.P.	-----	-----	82600.00
-----	10.00 HP	-----	-----	90200.00

**CODE NO. 918**      **BENCH DRILLING MACHINE**

HSN CODE: 84592910



DESCRIPTION	1/2"	5/8"	3/4"	1"
DRILLING CAP. IN STEEL	13	16	20	25
DRILLING CAP. IN CAST IRON	---	18	22	32
SPINDLE TRAVEL	87	89	125	165
PILLAR DIAMETER	48	48	75	90
PILLAR LENGTH	-----	-----	1065	1220
DISTANCE B/W CENTRE OF SPINDLE & TABLE	150	178	206	240
MAX DISTANCE B/W SPINDLE & TABLE	350	432	410	560
MAX DISTANCE B/W SPINDLE & BASE	475	508	785	1065
TABLE WORKING SPACE-MACHINED ROUND	----	----	325	----
TABLE WORKING SPACE-MACHINED SQUARE	213X213	241X241	280X280	370X370
BASE WORKING SURFACE (MACHINED)	213X200	216X203	265X290	395X340
MORSE TAPER IN SPINDLE	MT-2	----	MT-2	MT-3
SPINDLE SPEEDS WITH MOTOR (IN SIMPLE MODEL)	---	---	510-920-1590-280	580-950-1420-2-100
SPINDLE SPEEDS WITH MOTOR (IN GEARED MODEL)	-----	----	80-150-250-430	80-150-320-580
NO. OF SPINDLE HANDLES	4	4	----	----
MOTOR H.P	½ H.P.	1 H.P.	1 H.P.	2 H.P.
APPX. WEIGHT	35 KGS	55 KGS	125 KGS	140 KGS
<b>PRICE PER PC.₹</b>	19500.00	29400.00	94880.00	117880.00



**SURFACE PLATE & MARKING TABLE**

# SURAFCE PLATE & MARKING TABLE



**CODE NO. : 919G**

**SURFACE PLATE GRANITE**

**HSN CODE: 6801000**

**GRADE-1 MATERIAL**



SIZE IN MM	PRICE	STAND WITH VIBRATION PAD
300X300X50	3480.00	-----
400X400X63	6120.00	-----
450X450X63	7140.00	-----
630X400X80	7900.00	13000.00
630X630X80	13660.00	13000.00
900X600X100	23400.00	20000.00
900X900X100	38960.00	20000.00
1000X630X150	25500.00	21600.00
1000X1000X150	42400.00	21600.00
1200X900X150	47460.00	22440.00
1200X1200X150	68000.00	26340.00
1600X1000X200	87600.00	33200.00
2000X1000X200	118200.00	35700.00

**CODE NO : 920M**

**MARKING OFF TABLE**

HSN CODE: 90171000

**NEW**



SIZE IN MM	PRICE
900X900X900	54000.00
1200X1200X600	70000.00

**CODE NO : 921DC**

**DIAL COMPARATOR STANDS**

HSN CODE: 90318000 FINE ADJUSTMENT (SUPLIED W/O DIAL GAUGE)

**NEW**



NO .1      NO .2      NO .3      NO .4

DESCRIPTION	PRICE
ROUND SERRATED	12930.00
ROUND FLAT	11450.00
SQUARE FLAT	11450.00
SQUARE SERRATED	12930.00



# CLAMPING FIXTURE & ACCESSORIES



**CODE NO. 201**

HSN CODE: 82057000

**NEW**



**TAPPED END STRAP CLAMP WITH ADJ. SUPPORT**

SIZE IN MM	HXWXL	PRICE
12	-----	940.00
16	48X30X125	1132.00
20	63X38X180	2100.00
24	73X36X200	3200.00

**CODE NO. 205**

HSN CODE: 82057000

**NEW**



**UNIVERSAL STEP BLOCK (PAIR)**

HEIGHT MAX.	PRICE PER PAIR
53	662.00
105	990.00
208	2360.00

**CODE NO. 202**

HSN CODE: 82057000

**NEW**



**UNIVERSAL STRAP CLAMP**

SIZE	CLAMPING RANGE	PRICE
12	0-60	1540.00
14	0-60	1540.00
16	0-80	1990.00
18	0-80	1990.00
20	0-100	2980.00
22	0-100	2980.00
24	0-120	4100.00
28	0-120	4100.00

**CODE NO. 206**

HSN CODE: 82057000

**NEW**



**SCREW JACK STEEL BODY**

WITH FLAT SUPPORT

RANGE	PRICE
40-50	1200.00
50-70	1460.00
70-100	2150.00
100-140	3080.00
140-210	6180.00
190-300	9900.00

**CODE NO. 203**

HSN CODE: 82057000

**NEW**



**MOULD CLAMP**

WITH CLAMPING STUD & FLANGE NUT

CLAMPING STUD	CLAMPING RANGE	CLAMP SIZE	PRICE
M12-100	0-35	110X50	1600.00
M16-125	0-40	135X60	1820.00
M20-175	0-50	160X70	2980.00
M24-200	0-60	180X80	4060.00

**CODE NO. 207**

HSN CODE: 82057000

**NEW**



**SUPPORTING HEIGHT PLATES ADJ.**

SIZE IN MM (HEIGHT & THICKNESS)	PRICE
2X25	700.00
2X50	1030.00
2X75	1630.00
2X100	2320.00
2X125	3020.00
2X150	3620.00
4X25	888.00
4X50	1290.00
4X75	2040.00
4X100	2900.00
4X125	3780.00
4X150	4520.00
4X200	4980.00

**CODE NO. 204**

HSN CODE: 82057000

**NEW**



**MOULD CLAMP**

WITH T-BOLT & FLANGE NUT

T-SLOT SIZE	CLAMPING RANGE	CLAMP SIZE	PRICE
M12	0-25	110X50	1600.00
M14	0-25	110X50	1600.00
M16	0-40	125X60	1960.00
M18	0-40	125X60	1960.00
M20	0-50	160X70	3120.00
M22	0-50	160X70	3120.00
M24	0-60	180X80	4500.00
M28	0-60	180X80	4500.00

**CODE NO 208**

HSN CODE: 82057000



**STRAP CLAMP**

SIZE	SU. FOR SCREW	PRICE
9X60	M8	264.00
11X80	M10	426.00
14X100	M12	610.00
14X125	M14	760.00
18X125	M16	840.00
18X160	M16	960.00
22X160	M20	1590.00
22X200	M20	1760.00
26X200	M24	2540.00
26X250	M24	3050.00
30X250	M30	3580.00

**CODE NO 209**

HSN CODE: 82057000



**SERRATED STRAP CLAMP**

SIZE	SU. FOR SCREW	PRICE
11X80	M10	480.00
14X80	M12	560.00
14X100	M12	600.00
14X125	M12	760.00
18X125	M16	830.00
18X160	M16	1100.00
22X160	M20	1490.00
22X200	M20	1740.00
26X200	M24	2630.00

**CODE NO 210**

HSN CODE: 82057000



**U CLAMP**

SIZE	SU. FOR SCREW	PRICE
14X160	M12	806.00
18X200	M16	1390.00
22X250	M20	3230.00
26X250	M24	3320.00

**CODE NO 211**

HSN CODE: 82057000



**GOOSE NECK CLAMP**

SIZE	SU. FOR SCREW	PRICE
14X125	M12	950.00
18X160	M16	1500.00
22X200	M20	2732.00
26X250	M24	4690.00

**CODE NO 212**

HSN CODE: 82057000



**PLAIN WASHER**

SU. FOR SCREW	PRICE
M8	30.00
M10	36.00
M12	62.00
M14	72.00
M16	90.00
M20	108.00
M24	166.00
M30	294.00

**CODE NO 213**

HSN CODE: 82057000



**SPHERICAL WASHER**

WITH CONICAL SEAT

SU. FOR SCREW	PRICE
M8	50.00
M10	54.00
M12	74.00
M16	104.00
M20	152.00
M24	242.00

**CODE NO 214**

HSN CODE: 82057000



**C WASHER**

SU. FOR SCREW	PRICE
M8	68.00
M10	94.00
M12	122.00
M16	212.00
M20	310.00
M24	478.00

**CODE NO 215**

HSN CODE: 82057000



**HEX HI NUT**

SU. FOR SCREW	PRICE
M8	24.00
M10	30.00
M12	42.00
M14	52.00
M16	72.00
M20	122.00
M24	202.00
M30	386.00

**CODE NO 216**

HSN CODE: 82057000



**T-SLOT NUT**

SU. FOR SCREW	PRICE
8XM6	40.00
10XM8	54.00
12XM10	66.00
14XM12	94.00
16XM12	118.00
18XM12	136.00
18XM16	156.00
20XM16	190.00
22XM16	240.00
22XM20	324.00
24XM20	388.00
28XM24	424.00

**CODE NO 219**

HSN CODE: 82057000



**CLAMPING STUD**

WITH SLOTHAVING TAPPED HOLES(HARDENED & TEMPERED)

SIZE (T-SIZE X THREAD & LENGTH)	PRICE
M12X100	116.00
M12X125	138.00
M12X150	152.00
M12X 175	166.00
M16X125	186.00
M16X150	212.00
M16X175	252.00
M16X200	270.00
M20X125	224.00
M20X150	292.00
M20X175	342.00
M20X200	372.00
M24X150	384.00
M24X175	452.00
M24X200	508.00
M24X225	542.00

**CODE NO 217**

HSN CODE: 82057000



**FLANGE NUT**

SU. FOR SCREW	PRICE
M8	52.00
M10	68.00
M12	88.00
M16	142.00
M20	210.00
M24	278.00

**CODE NO 218**

HSN CODE: 82057000



**EXTENTION NUT**

SU. FOR SCREW	PRICE
M8	40.00
M10	48.00
M12	68.00
M14	102.00
M16	130.00
M20	234.00
M24	278.00
M30	790.00

**CODE NO220**

HSN CODE: 82060090



**CLAMPING TOOL KIT**

NO. OF ITEMS	PRICE PER PC
KIT OF 34 PCS	9450.00
KIT OF 58 PCS	14000.00



# CLAMPING FIXT. & ACCS.

## CODE NO 221

## CLAMPING STUD

HSN CODE: 82057000

## CODE NO 222

## T-BOLT

HSN CODE: 82057000

NEW

NEW



SIZE (T-SIZE X THREAD & LENGTH)	PRICE	SIZE (T-SIZE X THREAD & LENGTH)	PRICE
M8X32	28.00	M14X250	190.00
M8X40	30.00	M16X63	68.00
M8X50	30.00	M16X80	80.00
M8X63	40.00	M16X100	122.00
M8X80	42.00	M16X125	140.00
M8X100	46.00	M16X160	172.00
M8X150	52.00	M16X200	226.00
M10X50	38.00	M16X250	278.00
M10X63	42.00	M16X315	342.00
M10X80	50.00	M20X100	200.00
M10X100	56.00	M20X125	228.00
M10X125	72.00	M20X160	294.00
M10X160	110.00	M20X200	328.00
M10X200	112.00	M20X250	416.00
M12X50	44.00	M20X315	508.00
M12X63	50.00	M20X400	612.00
M12X80	56.00	M20X500	1826.00
M12X100	68.00	M24X100	206.00
M12X125	88.00	M24X125	294.00
M12X160	110.00	M24X160	322.00
M12X200	142.00	M24X200	418.00
M12X250	156.00	M24X250	506.00
M12X315	242.00	M24X315	676.00
M14X100	86.00	M24X400	824.00
M14X150	136.00	M24X500	1044.00
M14X200	160.00		



SIZE (T-SIZE X THREAD & LENGTH)	PRICE	SIZE (T-SIZE X THREAD & LENGTH)	PRICE
12MMXM12X50	110.00	18MMXM16X320	522.00
12MMXM12X65	120.00	20MMXM20X100	278.00
12MMXM12X80	124.00	20MMXM20X160	382.00
12MMXM12X100	144.00	20MMXM20X200	404.00
12MMXM12X125	156.00	22MMXM20X100	360.00
12MMXM12X160	178.00	22MMXM20X160	486.00
12MMXM12X200	202.00	22MMXM20X200	506.00
12MMXM12X250	244.00	22MMXM20X250	590.00
14MMXM12X80	150.00	22MMXM20X320	780.00
14MMXM12X100	170.00	24MMXM24X160	556.00
14MMXM12X125	190.00	24MMXM24X200	636.00
14MMXM12X160	204.00	24MMXM28X100	586.00
14MMXM12X200	238.00	24MMXM28X160	826.00
14MMXM12X250	288.00	24MMXM28X200	998.00
16MMXM16X80	186.00	24MMXM28X250	1312.00
16MMXM16X100	204.00	24MMXM28X320	1402.00
16MMXM16X125	232.00		
16MMXM16X160	248.00		
16MMXM16X200	320.00		
16MMXM16X250	416.00		
18MMXM16X80	190.00		
18MMXM16X100	228.00		
18MMXM16X125	238.00		
18MMXM16X160	266.00		
18MMXM16X200	334.00		
18MMXM16X250	450.00		



# HAMMERS

**CODE NQ601**

HSN CODE: 82052000



**CROSS/BALL PEEN HAMMER**

DROP FORGED WITH HANDLE

SIZE IN GMS	PRICE BALL PEEN/C.PEEN
100	130.00
200	176.00
300	220.00
500	286.00
600	352.00
800	418.00

**CODE NQ605**

HSN CODE: 82052000



**CLAW HAMMER TUBULAR**

DROP FORGED WITH HANDLE

SIZE IN GMS	PRICE
225	264.00
500	440.00

**CODE NQ602**

HSN CODE: 82052000



**MACHINIST HAMMER**

DROP FORGED WITH HANDLE

SIZE IN GMS	PRICE
100	144.00
200	176.00
300	220.00
500	264.00

**CODE NQ606**

HSN CODE: 82052000



**CLAW HAMMER WOODEN HANDLE**

FORGED STEEL

SIZE IN LBS	PRICE
3/4	232.00
1	264.00

**CODE NQ603**

HSN CODE: 82052000



**SOFT FACE MALLET HAMMER**

SIZE IN MM	PRICE
20	300.00
25	368.00
30	436.00
40	616.00
50	874.00

**CODE NQ607**

HSN CODE: 82052000



**CLAW HAMMER STEEL PIPE HANDLE**

SIZE IN LBS	PRICE	PRICE WITH GRIP
3/4	194.00	234.00
1	230.00	256.00

**CODE NQ604**

HSN CODE: 82052000



**SPARE MALLET**

SIZE IN MM	PRICE
20	46.00
25	70.00
30	92.00
40	184.00
50	264.00

**CODE NQ608**

HSN CODE: 82052000



**RAISING HAMMER**

SIZE IN MM	PRICE
100	280.00

# HAMMERS



**CODE NQ 609**

HSN CODE: 82052000



**SLEDGE HAMMER HEAD**

SIZE IN LBS	PRICE	SIZE IN LBS	PRICE
1	72.00	8	962.00
2	226.00	10	1200.00
2.5	246.00	12	1420.00
3	350.00	14	1880.00
4	500.00	16	2150.00
6	728.00	18	2420.00

**CODE NQ 613/613W**

HSN CODE: 82052000



**BRASS HAMMER**

FIBREGLASS HANDLE

SIZE IN GMS	PRICE
500	2728.00
1000	5260.00
1500	7560.00
2000	10150.00
2500	12420.00
3000	15120.00
4000	20260.00
5000	26460.00
10000	47780.00

**CODE NQ 610/610FG**

HSN CODE: 82052000



**SLEDGE HAMMER**

WOODEN & FIBREGLASS HANDLE

SIZE IN LBS	WOODEN HANDLE PRICE	FIBRE GLASS HANDLE
1	240.00	300.00
2	350.00	414.00
2.5	376.00	442.00
3	500.00	576.00
4	660.00	814.00
6	1100.00	1514.00
8	1330.00	1776.00
10	1660.00	2034.00
12	1892.00	2278.00

**CODE NQ614**

HSN CODE: 82052000



**COPPER HAMMER**

FIBREGLASS HANDLE

SIZE IN GMS	PRICE F.GLASS
500	3240.00
1000	6480.00
1500	10120.00
2000	12520.00
4000	25110.00
5000	31600.00

**CODE NQ611**

HSN CODE: 82052000



**SLEDGE HAMMER**

WITH PIPE HANDLE & GRIP

SIZE IN LBS	PRICE
1	290.00
1.1/2	314.00
2	380.00
2.1/2	492.00
3	628.00

**CODE NQ615**

HSN CODE: 82052000



**BALL PEEN/CROSS PEEN HAMMER**

FIBREGLASS HANDLE

SIZE IN GMS	PRICE
300	312.00
500	430.00
800	576.00

**CODE NQ612**

HSN CODE: 82052000



**DESI HAMMER**

DROP FORGED FULLY POLISHED

SIZE IN LBS	PRICE
2	290.00
3	426.00
4	470.00

**CODE NO. 616**

HSN CODE: 82052000



**CLAW HAMMER**

FIBREGLASS HANDLE

SIZE IN GMS	PRICE
500	650.00

**CODE NO. 617**

HSN CODE: 82052000



**PLANISHING HAMMER**

WOODEN HANDLE

SIZE IN GMS	PRICE
500	430.00

**CODE NO. 618**

HSN CODE: 82052000



**PEIN HAMMER**

SIZE IN GMS	PRICE
100	180.00

**CODE NO. 619**

HSN CODE: 82052000



**RUBBER HAMMER WOODEN HANDLE**

SIZE IN INCH	PRICE
1.1/4"	180.00
1.1/2"	200.00
2"	226.00
2.1/2"	356.00
3"	384.00

**CODE NO. 620**

HSN CODE: 82052000



**CLUB HAMMER**

WOODEN HANDLE/FIBREGLASS HANDLE

SIZE IN LBS	PRICE	FIBRE HANDLE
1	190.00	240.00
2	314.00	392.00
3	441.00	550.00
4	598.00	748.00
6	888.00	1110.00
8	1266.00	1582.00
10	1612.00	2016.00
12	1848.00	2300.00
14	2128.00	2660.00

**CODE NO. 621**

HSN CODE: 44170000



**WOODEN HAMMER**

SIZE IN MM	PRICE
40	176.00
50	184.00
60	208.00
75	254.00
100	430.00

**CODE NO. 622**

HSN CODE: 82052000



**BRICK HAMMER**

SIZE IN GMS	PRICE
500	240.00
1000	270.00

**CODE NO. 623**

HSN CODE: 82052000



**SILICON HAMMER**

SIZE IN MM	PRICE
40	144.00
50	196.00
60	220.00

**CODE NO. 624**

HSN CODE: 82052000



**CHIPPING HAMMER**

SIZE IN GMS	PRICE
300	240.00

WITH WOODEN HANDLE

SIZE IN GMS	PRICE
300	192.00
400	216.00



# SPANNERS

**CODE NO.625**

HSN CODE: 82041110



**DOUBLE OPEN END SPANNER**

METRIC MM	PRICE	METRIC MM	PRICE
6X7	30.00	32X36	270.00
8X9	41.00	34X36	390.00
10X11	44.00	34X38	414.00
12X13	52.00	36X41	390.00
14X15	56.00	41X46	520.00
16X17	71.00	46X50	800.00
18X19	89.00	50X55	1224.00
20X22	109.00	55X60	1780.00
21X23	145.00	60X65	5270.00
24X26	174.00	65X70	5500.00
24X27	174.00	70X75	9240.00
25X28	204.00	75X80	10080.00
27X32	220.00		
30X32	190.00		
30X36	360.00		

ENGLISH WW	PRICE
3/4X7/8	360.00
7/8X1	390.00
7/8X1.1/8	520.00
1X1.1/8	540.00
1.1/8X1.1/4	800.00
1.1/8X1.3/8	1224.00
1.1/4X1.3/8	1380.00

**CODE NO.628**

HSN CODE: 82041110



**BI-HEXAGONAL RING SPANNER**

METRIC MM	PRICE	METRIC MM	PRICE
6X7	64.00	34X38	1006.00
8X9	82.00	36X38	940.00
10X11	92.00	36X41	940.00
12X13	98.00	41X46	2148.00
14X15	108.00	46X50	2550.00
16X17	138.00	50X55	4020.00
18X19	158.00	55X60	4070.00
20X22	198.00	60X65	8860.00
21X23	232.00	65X70	11860.00
24X26	260.00	70X75	16116.00
24X27	260.00	75X80	20130.00
25X28	332.00		
30X32	440.00		
32X36	724.00		
34X36	910.00		

ENGLISH WW	PRICE
3/4X7/8	730.00
7/8X1	940.00
7/8X1.1/8	2250.00
1X1.1/8	2140.00
1.1/8X1.1/4	2530.00
1.1/8X1.3/8	3350.00
1.3/8X1.1/2	4050.00

**CODE NO. 626**

HSN CODE: 82041110



**DOUBLE OPEN END SPANNER SET**

SIZE IN MM	NO.OF PCS	PRICE
6X7-16X17	6 PCS	282.00
6X7-20X22	8 PCS	442.00
6X7-24X27	10 PCS	780.00
6X7-30X32	12 PCS	1110.00

**CODE NO. 629**

HSN CODE: 82041110



**COMBINATION SPANNER SET**

SIZE IN MM	NO.OF PCS	PRICE
8-17MM	6 PCS	374.00
6-19MM	8 PCS	530.00
6-22MM	10 PCS	840.00
6-32MM	12 PCS	3740.00

**CODE NO. 627**

HSN CODE: 82041110



**BI-HEXAGONAL RING SPANNER SET**

SIZE IN MM	NO.OF PCS	PRICE
6X7-16X17	6 PCS	584.00
6X7-20X22	8 PCS	880.00
6X7-24X27	10 PCS	1420.00
6X7-30X32	12 PCS	2060.00

**CODE NO. 630**

HSN CODE: 82041110



**FISH BOLT SPANNER**

SIZE IN MM	PRICE
36X41	1056.00
41X41	1408.00
41X46	1460.00

# SPANNERS



## CODE NQ631

HSN CODE: 82041110



## COMBINATION SPANNER

METRIC MM	PRICE	METRIC MM	PRICE
6	52.00	32	485.00
7	52.00	33	1150.00
8	52.00	34	1150.00
9	54.00	35	1266.00
10	56.00	36	1524.00
11	58.00	38	1582.00
12	60.00	40	2185.00
13	64.00	41	1898.00
14	80.00	42	2558.00
15	82.00	43	3335.00
16	96.00	44	2760.00
17	96.00	45	3594.00
18	118.00	46	2588.00
19	124.00	48	3120.00
20	134.00	50	2800.00
21	166.00	55	6800.00
22	174.00	60	7550.00
23	190.00	65	8080.00
24	210.00	70	9060.00
25	248.00	75	10030.00
26	264.00	80	12940.00
27	320.00	85	14650.00
28	356.00	90	17250.00
29	448.00	95	29550.00
30	448.00	100	30180.00

## CODE NQ633

HSN CODE: 82041110



## SLOGGING OPEN END SPANNER

METRIC MM	PRICE	METRIC MM	PRICE
22	320.00	85	6070.00
24	320.00	90	8932.00
27	370.00	95	11750.00
30	404.00	100	14370.00
32	404.00	105	18460.00
34	470.00	110	32600.00
36	480.00	115	30510.00
38	590.00	120	35400.00
41	640.00		
46	830.00		
50	990.00		
55	1370.00		
60	1700.00		
65	2350.00		
70	3410.00		
75	4690.00		
80	5770.00		

## CODE NQ634

HSN CODE: 82041110



## SLOGGING RING SPANNER

METRIC MM	PRICE	METRIC MM	PRICE
22	320.00	85	5530.00
24	320.00	90	8320.00
27	360.00	95	11180.00
30	405.00	100	12040.00
32	405.00	105	16590.00
34	450.00	110	20620.00
36	480.00	115	23470.00
38	510.00	120	27390.00
41	580.00		
46	704.00		
50	1190.00		
55	1210.00		
60	1460.00		
65	1870.00		
70	2910.00		
75	3640.00		
80	4910.00		

## CODE NQ632

HSN CODE: 82041110



## WHEEL SPANNER

METRIC MM	PRICE	METRIC MM	PRICE
24X27	670.00	33X33	670.00
27X27	670.00	32X32	670.00
27X30	670.00	30X32	670.00
27X32	670.00	30X33	670.00
30X30	670.00	32X36	670.00
32X33	670.00		
SPARE TOMMY BAR 18"(1200MM) : 660.00			

**CODE NO .635**

HSN CODE: 82041110



**SINGLE OPEN END SPANNER**

METRIC MM	PRICE	METRIC MM	PRICE
13	60.00	70	2550.00
17	70.00	75	2880.00
19	70.00	80	5330.00
22	100.00	85	6380.00
24	130.00	90	9590.00
32	160.00	95	10650.00
34	211.00	100	12780.00
36	255.00	105	14920.00
38	270.00	110	17580.00
41	360.00	115	19800.00
46	450.00	120	22990.00
50	550.00		
55	950.00		
60	1280.00		
65	1650.00		

**CODE NO. 637**

HSN CODE: 82041110



**TUBULAR BOX SPANNER SET**

SIZE IN MM	PRICE
SET OF 8 (6X7-20X22)	780.00
SET OF 12 (6X7-30X32)	1630.00

**CODE NO.638**

HSN CODE: 82041120



**4 WAY WHEEL SPANNER**

SIZE	PRICE
17,18,19,21	440.00
17,19,21,23	440.00
10,11,13,14	324.00

**CODE NO. 639**

HSN CODE: 82041120



**L-SPANNER**

SIZE	SUITABLE FOR	PRICE
17MM	-----	231.00
18MM	INDICA	246.00
19MM	MARUTI	308.00
20.8MM(13/16)	JEEP	270.00
21MM	-----	282.00

**CODE NO. 636**

HSN CODE: 82041110



**TUBULAR BOX SPANNER**

METRIC MM	PRICE	METRIC MM	PRICE
6X7	36.00	24X27	194.00
8X9	42.00	25X28	216.00
10X11	48.00	30X32	264.00
12X13	64.00	32X36	302.00
14X15	74.00	36X41	334.00
16X17	86.00	41X46	382.00
17X19	104.00	46X50	451.00
18X19	104.00	50X55	536.00
20X22	116.00	55X60	712.00
21X23	132.00	60X65	803.00
22X24	194.00	65X70	1030.00
24X26	194.00	70X75	1133.00
SPARE TOMMY BAR 12X250:		72.00	

**CODE NO.640**

HSN CODE: 82041110



**C- HOOK SPANNER PIN TYPE**

SIZE IN MM	PRICE
30-32	630.00
34-36	630.00
40-42	630.00
45-50	700.00
52-55	860.00



# PLIERS & WRENCHES



**CODE NO.641**

HSN CODE: 82032000



**COMBINATION PLIER**

SIZE IN INCH	PRICE
6"	190.00
8"	240.00
6 TAPARIA TYPE	230.00
8 CRV	310.00

**CODE NO. 642**

HSN CODE: 82032000



**SIDE CUTTING PLIER**

SIZE IN INCH	PRICE
6"	220.00
8"	270.00
6 CRV	280.00

**CODE NO. 643**

HSN CODE: 82032000



**LONG NOSE PLIER**

SIZE IN INCH	PRICE
6"	220.00
8"	270.00
6 CRV	280.00

**CODE NO. 644**

HSN CODE: 82032000



**SLIP JOINT PLIER**

SIZE IN INCH	PRICE
6"	160.00
8"	170.00

**CODE NO. 645**

HSN CODE: 82032000



**PINCER**

SIZE IN INCH	PRICE
6"	140.00
8"	160.00

**CODE NO. 646**

HSN CODE: 82032000



**FLAT NOSE PLIER**

SIZE IN INCH	PRICE
6"	180.00
8"	280.00

**CODE NO.647**

HSN CODE: 82032000



**TOP CUTTER**

SIZE IN INCH	PRICE
6"	180.00
8"	200.00

**CODE NO.648**

HSN CODE: 82032000



**CIRCLIP PLIER**

SIZE IN INCH	PRICE PER PC. FORGED STEEL	PRICE PER PC POWDER PAINT
5"	----	172.00
6"	----	180.00
7"	----	194.00
8"	----	212.00
10"	----	450.00
12"	----	500.00
15"	860.00	-----
18"	1010.00	-----
24"	1390.00	-----

**CODE NO. 649**

HSN CODE: 82032000



**WIRE CUTTER**

SIZE IN INCH	PRICE
6"	72.00
8"	100.00

**CODE NO. 650**

HSN CODE: 82032000



**ROUND NOSE PLIER**

SIZE IN INCH	PRICE
4"	180.00
6"	180.00

**CODE NO. 651**

HSN CODE: 82032000



**WATER PUMP PLIER**

SIZE IN INCH	DESCRIPTION	PRICE
10"	WITH GROOVE	230.00
12"	WITH GROOVE	310.00
10"	BOX JOINT SKIN PACKED	290.00
12"	BOX JOINT SKIN PACKED	350.00
10"	WITHOUT GROOVE	220.00

# PLIERS & WRENCHES



**CODE NQ652**

HSN CODE: 82032000



**TIN SNIP**

WITHOUT SPRING STRAIGHT & BEND

SIZE IN INCH	STRAIGHT PRICE	BEND PRICE
6"	140.00	160.00
8"	140.00	160.00
10"	180.00	204.00
12"	220.00	240.00
14"	660.00	690.00
16"	720.00	----
18"	860.00	----
20"	1190.00	----
24"	1430.00	----
36"	2150.00	-----

**CODE NQ657**

HSN CODE: 82041220



**PIPE WRENCH**

STILSON TYPE D/F HEAVY DUTY

SIZE IN INCH	PRICE
8"	240.00
10"	310.00
12"	440.00
14"	530.00
18"	930.00
24"	1590.00
36"	3520.00
48"	6820.00

**CODE NQ653**

HSN CODE: 82032000



**TIN SNIP**

DROP FORGED

SIZE IN INCH	PRICE
6"	180.00
8"	180.00
10"	220.00
12"	270.00
14"	690.00

**CODE NQ 658**

HSN CODE: 82041220



**PIPE WRENCH**

RIGID TYPE

SIZE IN INCH	PRICE
14"	680.00
18"	860.00
24"	1630.00
36"	2840.00
48"	5960.00

**CODE NO .654**

HSN CODE: 82032000



**CABLE CUTTER**

SIZE IN INCH	PRICE
6"	490.00

**CODE NQ 659**

HSN CODE: 82041220



**ADJUSTABLE WRENCH**

DROP FORGED

SIZE IN INCH	PRICE
6"	300.00
8"	310.00
10"	380.00
12"	490.00
15"	1100.00
18"	3280.00
24"	5190.00

**CODE NQ 655**

HSN CODE: 82032000



**VICE GRIP PLIER**

SIZE IN MM	PRICE
250	330.00

**CODE NQ 656**

HSN CODE: 82032000



**AVIATION SNIP**



SIZE IN MM	STRAIGHT PRICE	LEFT/RIGHT CUT PRICE
250	360.00	540.00

**CODE NQ 660**

HSN CODE: 82041220



**PIPE CUTTER**

SIZE IN INCH	PRICE
1"	1670.00
2"	1800.00
3"	3322.00
4"	6250.00
6"	8270.00



**CODE NO. 661**

HSN CODE: 82033000



**TUBE CUTTER**

SIZE IN INCH	PRICE
1/8"-1.1/8"	680.00
SPARE WHEEL(C.S)	160.00
SPARE WHEEL(H.S.S)	620.00

**CODE NO. 665**

HSN CODE: 82055990



**SPARE CHASER & COLLET FOR DIE HEAD**

SIZE IN INCH	PRICE CHASER	PRICE DIE HEAD
1/2-1"	440.00	790.00
1.1/4-2"	880.00	1710.00
2.1/2-3"	2530.00	3100.00
4"	2650.00	5590.00

**CODE NO. 662**

HSN CODE: 82055990



**PIPE DIE SET COMPLETE**

BSP & BSC

SIZE IN INCH	PRICE
1/2-1"	1900.00
1.1/4-2"	3640.00
2.1/2-3"	7360.00
3.1/2-4"	16480.00
4"	14380.00

**CODE NO. 666**

HSN CODE: 82041220



**CHAIN PIPE WRENCH**

HEAVY DUTY WITH KAMANI STEEL JAWS & DROP FORGED ROD

SIZE IN INCH	PRICE HEAVY	PRICE MEDIUM
2"	1310.00	1520.00
3"	1930.00	2030.00
4"	2840.00	2440.00
6"	3410.00	3450.00
8"	4200.00	-----
10"	9350.00	-----
12"	10740.00	-----
14"	16240.00	-----
16"	19360.00	-----
18"	22880.00	-----
24"	30030.00	-----

**CODE NO. 663**

HSN CODE: 82055990



**SPARE BUSH & DIES IN BSP & BSC**

BSP & BSC

SIZE IN INCH	PRICE BUSH	PRICE DIES
1/2-1"	94.00	180.00
1.1/4-2"	170.00	510.00
2.1/2-3"	366.00	1440.00
3.1/2-4"	653.00	3070.00

**CODE NO. 667**

HSN CODE: 82041220



**SPARE CHAIN & PLATES FOR CHAIN WRENCH**

SIZE IN INCH	PRICE CHAIN	PRICE PLATES
2"	310.00	320.00
3"	522.00	540.00
4"	770.00	450.00
6"	920.00	920.00
8"	1140.00	1350.00
10"	3640.00	2230.00
12"	4240.00	2460.00
14"	5220.00	2850.00

**CODE NO. 664**

HSN CODE: 82055990



**RATCHET PIPE THREADER**

SIZE IN INCH	PRICE
1/2-1"	3620.00
1.1/4-2"	6660.00
2.1/2-3"	9530.00
4"	9530.00

**CODE NO. 668**

HSN CODE: 82051000



**TAP DRILL**

SIZE IN INCH	PRICE
1/2	580.00
3/4	940.00
1	1260.00

**CODE NO. 671**

HSN CODE: 42029100

**LEATHER TOOL KITS**



**CODE NO. 669**

HSN CODE: 82052000



**BODY FENDER TOOL KIT**

DESCRIPTION	PRICE
SET OF 8 PCS	3150.00
SET OF 16 PCS	5020.00

**CODE NO. 670**

HSN CODE: 82060090

**PLUMBING KIT**



NO. OF ITEMS	PRICE
41	57750.00

LIST OF CONTENTS	PCS
RATCHET PIPE THREADER 1/2-1.1/4"	1
PIPE WRENCH H. DUTY 10" & 12"	1
PIPE CUTTER 2"	1
ADJ. WRENCH 10" & 12"	1
COMBINATION PLIER 8"	1
SPIRIT LEVEL 12"	1
STEEL MEASURING TAPE 5 MTR	1
WATER PUMP PLIER 10"	1
TUBE CUTTER 3-30MM	1
CHAIN WRENCH MEDIUM 3"	1
HACKSAW FRAME JUNIOR 6"	1
HACKSAW FRAME FIX 12"	1
SOFT FACE Mallet HAMMER 30MM	1
BALL PEEN HAMMER 300GMS	1
ALLEN KEY SET	9
TRY SQ. 6"	1
TAP & DIE SET 1/4-1/2"	1
DOE SPANNER SET 6X7 -30X32	8
RING SPANNER SET 6X7-30X32	8

DESCRIPTION	PRICE
10 POCKET LARGE	950.00
10 POCKET MEDIUM	600.00
5 POCKET	420.00
3 POCKET	690.00
2 POCKET	270.00
WELDING APRON	1130.00
HAMMER HOLDER	140.00

**CODE NO. 672**

**MECHANIC'S TOOL KIT**

HSN CODE: 82060090



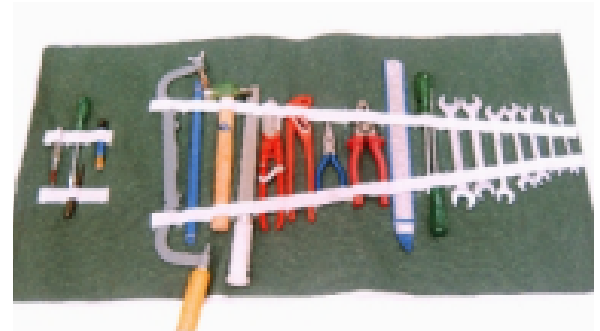
NO. OF ITEMS	PRICE PER PC
81	43760.00

LIST OF CONTENTS	PCS
DO.E SPANNER SET 6X7-30X32	12
RING SPANNERS SET 6X7-30X32	12
PIPE WRENCH	2
WIRE CUTTER 6"	1
COMBINATION PLIER 8"	1
BALL PEEN HAMMER	1
STEEL MEASURING TAPE 5 MTR	1
SCREW DRIVER SET	1
SCREW DRIVER FLAT 250 & 300	2
SCREW DRIVER PHILLIPS 100 & 150MM	2
ADJ. WRENCH	1
SOCKET 1/2" SQ. DRIVE SET 6-32MM	32
RATCHET SPANNER	1
HACKSAW FRAME FIX 12"	1
SOFT FACE Mallet HAMMER 30MM	1
ALLEN KEY SET	9
HAND DRILL MACHINE	1
T-HANDLE	1
SCISSOR	1
TOOL BOX	1
G-CLAMP DROP FORGED	1
CHISEL	1
CENTRE PUNCH	1
OIL CAN	1
BOLT CUTTER	1
LONG NOSE PLIER	1
VIE GRIP PLIER	1
STEEL RULE	1

**CODE NO. 673**

**ELECTRICIAN'S TOOL KIT**

HSN CODE: 82060090



NO. OF ITEMS	PRICE
21	3600.00

LIST OF CONTENTS	PCS
DO.E SPANNER SET 6X7-16X17	6
PIPE WRENCH	1
NOEN TESTER	1
WIRE CUTTER 6"	1
COMBINATION PLIER 8"	1
BALL PEEN HAMMER	1
SCREW DRIVER FLAT 250	1
SCREW DRIVER PHILLIPS 150MM	1
ADJ. WRENCH	1
HACKSAW FRAME FIX 12" WITH 10 BLADE	1
TIN CUTTER	1
CHISEL	1
CENTRE PUNCH	1
BOLT CUTTER	1
STEEL RULE	1
TOOL BOX	1

**CODE NO. 674**

**2 WHEELER TOOL KIT**

HSN CODE: 82071900



NO. OF ITEMS	PRICE
60	14670.00

LIST OF CONTENTS	PCS
RING SPANNER SET 6X7-30X32	12
DO.E SPANNER SET 6X7-20X22	8
LONG NOSE PLIERS	1
WIRE CUTTER 6"	1
COMBINATION PLIER 6" & 8"	2
BALL PEEN HAMMER	1
SCREW DRIVER FLAT	4
SCREW DRIVER PHILLIPS	4
ADJ. WRENCH	1
T HANDLE	1
L HANDLE	1
SOCKET 1/4" SQ. DRV. SET OF 10PCS	10
CHISEL	1
BOLT CUTTER	1
EXTENSION BAR SMALL & BIG	2
ALLEN KEY SET OF 9	9
TOOL BOX	1

**CODE NO. 675**



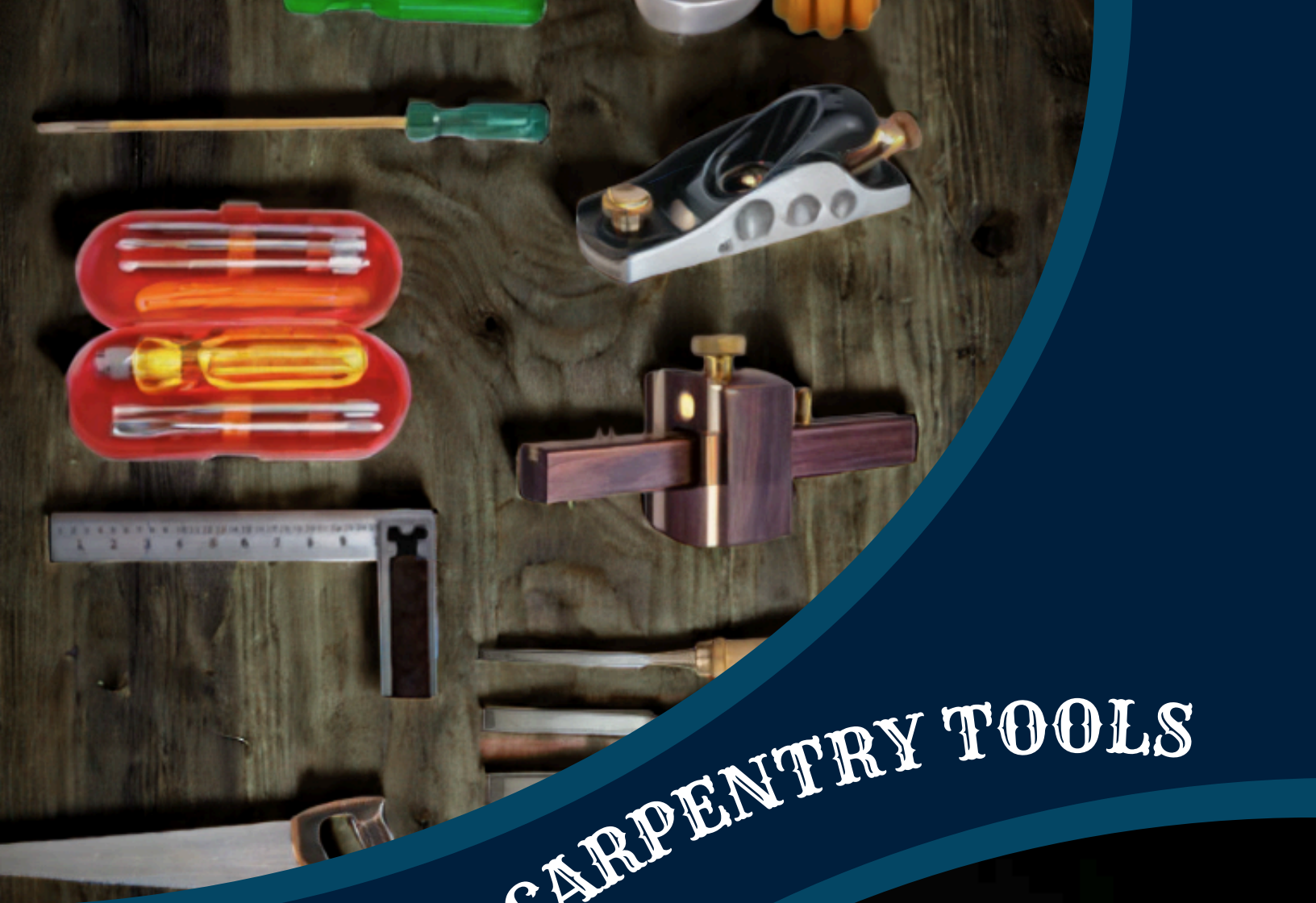
**INJECTION INSULATED TOOL KIT**

HSN CODE: 82060090



NO. OF ITEMS	PRICE
31	ON REQUEST

LIST OF CONTENTS	SIZE
INSULATED SOCKET 1/2"	8-22
INSULATED HEXAGON SOCKET 1/2"	4X120,5X120MM 6X120,8X120
INSULATED EXTENSION BAR 1/2"	125-250
INSULATED T-HANDLE WRENCH	200
INSULATED REVERSIBLE RATCHET 1/2"	250
INSULATED PLIER	200
INSULATED DIAGONAL PLIER	180
INSULATED SNIPE NOSE	-----
SIDE CUTTING PLIER	180
INSULATED ADJ. SPANNER	250
INSULATED SCREW DRIVER	SLOTTED:4X100 ,5.5X125 PHILLIPS:1X80,2X100



# SCREW DRIVERS & CARPENTRY TOOLS



**CODE NO. 676**

HSN CODE: 82033000



**SCREW DRIVER FLAT TIP & PHILLIPS**

SIZE	PRICE FLAT TIP	PRICE PER PHILLIPS
3X65	42.00	44.00
3X100	44.00	48.00
3X150	48.00	52.00
4X100	68.00	72.00
4X150	74.00	76.00
4X200	80.00	82.00
6X100	74.00	82.00
6X150	82.00	86.00
6X200	88.00	92.00
6X250	96.00	98.00
6X300	102.00	108.00
8X150	128.00	134.00
8X200	136.00	140.00
8X250	144.00	152.00
8X300	150.00	158.00
10X200	224.00	238.00
10X250	252.00	-----
10X300	272.00	-----
10X400	300.00	-----
10X450	314.00	-----

**CODE NO. 679**

HSN CODE: 82033000



**SCREW DRIVER REVERSIBLE 2 IN 1**

SIZE	PRICE
4X75	60.00
4X100	70.00
4X150	74.00
4X200	78.00
6X100	98.00
6X150	106.00
6X200	120.00
6X250	132.00

**CODE NO. 680**

HSN CODE: 82033000



**NUT DRIVER KIT**

SIZE	PRICE
SET OF 5	734.00

**CODE NO. 681**

HSN CODE: 82033000



**NUT DRIVER**

SIZE IN MM	PRICE
4-7	150.00
8-10	190.00
11-13	220.00
14	240.00

**CODE NO. 677**

HSN CODE: 82033000



**SCREW DRIVER HEAVY DUTY**

SIZE	PRICE
504	68.00
506	72.00
508	80.00
510	98.00
512	102.00

**CODE NO. 682**

HSN CODE: 82033000



**SCREW DRIVER KIT**

SET OF 6 PCS

SIZE	PRICE
STANDARD	240.00

**CODE NO. 678**

HSN CODE: 82033000



**NEON TESTER/LINE TESTER**

SIZE	PRICE
230V	50.00
500V H	72.00

**CODE NO. 683**

HSN CODE: 82033000



**SCREW DRIVER KIT**

SET OF 8 PCS

SIZE	PRICE
STANDARD	300.00

**CODE NQ684**

HSN CODE: 82057000



**CARPENTRY RATECHET BRACE**

SIZE IN MM	PRICE
ORDINARY	820.00

**CODE NQ690**

HSN CODE: 82053000



**MORTISE CHISEL**

SIZE IN MM	PRICE
6	160.00
8	160.00
10	170.00
12	184.00
19	230.00
25	256.00

**CODE NQ685**

HSN CODE: 82057000



**T-BAR CRAMP**

SIZE IN INCH / FT	PRICE 2" T	PRICE 2.1/2" T
36 (3FT)	1480.00	1850.00
48 (4FT)	1580.00	2000.00
60 (5FT)	1690.00	2160.00
72 (6FT)	1800.00	2310.00
84 (7FT)	1980.00	2530.00
96 (8FT)	2080.00	2660.00

**CODE NQ691**

HSN CODE: 82053000



**FIRMER CHISEL**

SIZE IN MM	PRICE	SIZE IN MM	PRICE
6	170.00	32	244.00
10	170.00	38	250.00
12	170.00	45	324.00
19	206.00	50	340.00
25	212.00		

**CODE NQ686**

HSN CODE: 82053000



**BLOCK PLANE/BABY PLANE**

SIZE	PRICE
NO.102	510.00
NO.110	530.00

**CODE NQ692**

HSN CODE: 82053000



**BEVEL EDGE CHISEL**



SIZE IN MM	PRICE
12	190.00
19	240.00
25	240.00
32	284.00
38	300.00
45	380.00
50	400.00

**CODE NQ687**

HSN CODE: 82041220



**HAND DRILL MACHINE**

DESCRIPTION	SIZE	PRICE
STANLEY TYPE NICKET	1/4	380.00
SPARE DRILL CHUCK	1/4	100.00

**CODE NQ693**

HSN CODE: 82053000



**WOOD CARVING CHISEL SET**

SIZE	PRICE
SET OF 5	750.00

**CODE NQ688**

HSN CODE: 82053000



**RABBET PLANE**

SIZE	PRICE
STANDARD	4620.00

**CODE NQ689**

HSN CODE: 82053000



**JACK PLANE WITH BRASS NUT/SPARE BLADE**

SIZE	PRICE	SIZE BLADE	PRICE
NO.4	1040.00	NO.4	100.00
NO.5	1290.00	NO.5	100.00
NO.6	1960.00	NO.6	120.00
NO.7	430.00	NO.7	60.00
NO.8	1600.00	NO.8	70.00

**CODE NQ694**

HSN CODE: 82041120



**CARPENTRY TRY SQUARE**

SIZE IN INCH	PRICE
6	130.00
8	170.00
10	200.00
12	240.00
18	580.00
24	820.00

**CODE NQ695**

HSN CODE: 82041120



**TRY SQUARE ANGLE CUT**

SIZE IN INCH	PRICE
6	90.00
8	120.00
10	160.00
12	190.00

**CODE NQ700**

HSN CODE: 82041120



**MORTISE GAUGE**

SIZE IN INCH	PRICE
3	700.00
6	940.00
9	980.00

**CODE NQ696**

HSN CODE: 82041120



**MAISON TRY SQAURE**

SIZE IN INCH	PRICE
12X24 POLISHED	300.00
12X24 PAINTED	410.00

**CODE NQ701**

HSN CODE: 82041120



**MARKING GAUGE**

SIZE IN INCH	PRICE
3	350.00
6	700.00
9	740.00

**CODE NQ697**

HSN CODE: 82041220



**BREAST DRILL MACHINE**

DESCRIPTION	SIZE IN INCH	PRICE
SEMI STEEL(MADE ON CNC MACHINE HEAVY)	3/8"	1400.00
	1/2"	1960.00
ALL STEEL GEAR (MADE ON CNC MACHINE HEAVY)	3/8"	1600.00
	1/2"	2180.00
SPARE DRILL CHUCK	3/8"	310.00
	1/2"	450.00

**CODE NQ702**

HSN CODE: 82041120



**NAIL PULLER**

SIZE	PRICE
S TYPE	300.00

**CODE NQ698**

HSN CODE: 8425



**BENCH GRINDER**

DESCRIPTION	SIZE	PRICE
JAPAN TYPE	4	900.00
JAPAN TYPE	6	980.00
JAPAN TYPE	8	1300.00
IXION TYPE	6	1390.00
IXION TYPE LONG SPINDLE	6	1440.00
IXION TYPE	8	2870.00
IXION TYPE LONG SPINDLE	8	2900.00
H.S.W/OUT BEARING	8	2820.00
H.S WITH BEARING	8	3058.00

**CODE NQ703**

HSN CODE: 82053000



**HANDSAW HEAVY DUTY**

SIZE IN MM	PRICE
300	240.00
450	360.00

**CODE NQ704**

HSN CODE: 82041120



**ENGINEER SPIRIT LEVEL**

SIZE IN MM	PRICE
200	420.00
250	580.00
300	640.00
400	950.00
450	1080.00
600	1490.00

**CODE NQ699**

HSN CODE: 8205



WOODEN HANDLE



P.C.P MATERIAL UNBREAKABLE

**WOODEN FILE HANDLE/FILE HANDLE**

SIZE	PRICE
4 WOODEN	30.00
5 WOODEN	40.00
6 WOODEN	50.00
FLAT P.C.P MATERIAL	50.00
ROUND WITH STEEL RING P.C.P MATERIAL	60.00

**CODE NO. 705**

HSN CODE: 82029910



**HACKSAW FRAME FIXED**

FIXED POLAND TYPE

SIZE	PRICE
HEAVY 12X6	250.00
MINI POLAND 12X6	180.00

**CODE NO. 706**

HSN CODE: 82029910



**HACKSAW FRAME FIXED**

SIZE	PRICE
5MM	150.00
6MM	160.00

**CODE NO.707**

HSN CODE: 82029910



**HACKSAW FRAME TUBULAR ADJ.**

SIZE	PRICE
250-300MM	220.00

**CODE NO.708**

HSN CODE: 82029910



**HACKSAW FRAME TUBULAR SQUARE**

SIZE	PRICE
300MM	280.00

**CODE NO. 709**

HSN CODE: 82029910



**HACKSAW FRAME HEAVY DUTY**

WITH ALLUMINIUM HANDLE

SIZE	PRICE
250-300MM	880.00

**CODE NO. 710**

HSN CODE: 82029910



**HACKSAW FRAME JUNIOR**

SIZE	PRICE
150MM	50.00
150MM H.DUTY	440.00

**CODE NO. 711**

HSN CODE: 82029910



**FRET SAW FRAME**

SIZE	PRICE
150MM	640.00

**CODE NO.712**

HSN CODE: 82029910



**HACKSAW FRAME JUNIOR PISTOL GRIP**

SIZE IN INCHES	PRICE
6	100.00
8	120.00

**CODE NO.713**

HSN CODE: 82053000



**POCKET KNIFE**

SIZE	PRICE
STANDARD	300.00

**CODE NO.714**

HSN CODE: 82029910



**HACKSAW BLADE**

SIZE	PRICE PER 100PCS
12X18 TPI	920.00
12X24 TPI	920.00
6MMX6	500.00
FRET SAW BLADE	240.00

**CODE NO. 715**

HSN CODE: 82029910



**DEEP HACKSAW FRAME**

SIZE	PRICE
3" DEEP POWDER COATED	410.00
4.5" DEEP POWDER COATED	440.00
6" DEEP-POWDER COATED	480.00
8" DEEP-POWDER COATED	560.00
10" DEEP-POWDER COATED	640.00

**CODE NO.716**

HSN CODE: 82053000



**CABINET SCREW DRIVER**

SIZE	PRICE
100MM	260.00
200MM	300.00
250MM	440.00
300MM	480.00

**CODE NO.717**

HSN CODE: 82073000



**WOODEN DRILL BIT SET**

SIZE	PRICE
SET OF 5 (4-10MM)	800.00



# MASON TOOLS



**CODE NQ 718**

HSN CODE: 82055990



**PLUMBOB**

SIZE	PLASTIC PRICE	SIZE IN GMS	PRICE
NO.1	120.00	115	80.00
NO.2	130.00	200	100.00
NO.3	200.00	500	240.00

**CODE NQ719**

HSN CODE: 82011000



**SPADE WITH WOODEN HANDLE**

SIZE	PRICE
STANDARD	570.00

**CODE NQ720**

HSN CODE: 82011000



**SHOWEL WITH WOODEN HANDLE**

SIZE	PRICE
STANDARD	610.00

**CODE NQ721**

HSN CODE: 82011000



**AXE WITH WOODEN HANDLE**

SIZE	PRICE
STANDARD	1030.00

**CODE NQ722**

HSN CODE: 82011000



**TILE TROWEL**

WOODEN HANDLE

(MATERIAL CR H&T COIL TROWEL SHEET)

SIZE IN INCH	PRICE
11	1290.00

**CODE NQ 723P/723H**

HSN CODE: 82011000



**TROWEL POINTED & HEART SHAPE**

WOODEN HANDLE

(MATERIAL CR H&T COIL TROWEL SHEET)

SIZE IN INCH	PRICE POINTED	PRICE HEART SHAPE
4	300.00	400.00
6	480.00	630.00
8	560.00	730.00
11	780.00	-----

**CODE NQ 724**

HSN CODE: 82011000



**INSIDE /OUTSIDE CORNER 90° TROWEL**

WOODEN HANDLE

(MATERIAL CR H&T COIL TROWEL SHEET)

SIZE IN INCH	PRICE
6 INSIDE	470.00
6 OUTSIDE	470.00

**CODE NQ 725**

HSN CODE: 82011000



**TROWEL PLASTERING**

WOODEN HANDLE

(MATERIAL CR H&T COIL TROWEL SHEET)

SIZE IN INCH	PRICE	PRICE WOODEN
8	510.00	620.00
11	720.00	870.00
13	1040.00	1250.00

**CODE NQ 726**

HSN CODE: 82011000



**BRUSHES**

SIZE IN INCH	PRICE
WIRE BRUSH	70.00
BENCH BRUSH	90.00
FILE CARD	180.00
MACHINE BRUSH	1660.00

**CODE NQ727**

HSN CODE: 82053000



**MEASURING TAPE**



SIZE IN MTR	PRICE
3 MTR	70.00
5 MTR	170.00
15 MTR	490.00
30 MTR	820.00

A collage of garage tools. The top half shows various tools hanging on a wooden wall: a silver air compressor, a red fire extinguisher, a screwdriver with a blue handle, a metal tray, and two blue-handled tools with yellow caps. The bottom half shows a red hydraulic jack with a yellow handle, positioned in front of a car tire.

# GARAGE TOOLS

**CODE NQ728**

HSN CODE: 82041120



**SPARK PLUG SPANNER**

SIZE	PRICE
14X18	420.00

**CODE NQ729**

HSN CODE: 84254200



**SCISSOR JACK**

SIZE	PRICE
12 PATTI	1410.00
MARUTI CAR	790.00
MARUTI VAN	1170.00
ZEN	1150.00
TATA SUMO	1740.00
TATA INDICA	1260.00

**CODE NQ730**

HSN CODE: 84254200



**MECHANICAL JACK(SCREW JACK)**

HEAVY DUTY ALL STEEL BODY (WITHOUT ROD)

DESCRIPTION	CAP. IN TON	PRICE
SCREW JACK	2	1560.00
SCREW JACK	3	1690.00
SCREW JACK	5	1860.00
SCREW JACK	10	2040.00
SCREW JACK	15	2080.00
SCREW JACK	20	2280.00
SCREW JACK	25	2480.00
SCREW JACK	35	2640.00
SCREW JACK	50	2950.00
SCREW JACK	65	3060.00
STEEL JACK TAPER BEARING	75	4680.00
SCREW JACK	100	6510.00
ROD FOR JACK	1X24	940.00
ROD FOR JACK	1X48	1450.00



**CODE NQ731**

HSN CODE: 84254200



**SPARE ROD FOR MECHANICAL JACK**

SIZE IN INCHES	PRICE
20X36	930.00
20X48	1450.00

**CODE NQ732**

HSN CODE: 84254200



**HYDRUALIC JACK**

CAP. IN TON	PRICE
15	4220.00
25	5900.00
50	7760.00
75	9480.00
100	9800.00

**CODE NQ 733**

HSN CODE: 84254200



**CHASIS JACK**

CAP. IN TON	PRICE
24	8800.00
36	9800.00

**CODE NQ 734**

HSN CODE: 84678990



**HYDRAULIC BEARING PULLER**

CAP. IN TON	PRICE
5	7560.00
10	7700.00
20	24500.00
30	28000.00

**CODE NQ 735**

HSN CODE: 82033000



**GEAR PULLER**

SIZE IN INCHES	PRICE
2.1/4	350.00
4	450.00
6	660.00

**CODE NQ736**

HSN CODE: 82033000



**STUD PULLER**

DESCRIPTION	SIZE IN INCHES	PRICE
WILLAIM TYPE	3/4	1160.00
ELORA TYPE	1/2	470.00
ELORA TYPE	3/4	760.00
GERMAN TYPE	1/2	420.00
GERMAN TYPE	3/4	760.00

**CODE NQ737**

HSN CODE: 82033000



**FAN BEARING PULLER**

BEARING SIZE	PRICE PER PC
6000	220.00
6001	220.00
6200	240.00
6201	240.00
6202	250.00
6203	300.00
6200-6201	260.00
6201-6202	270.00
6202-6203	280.00

**CODE NQ738**

HSN CODE: 82079090



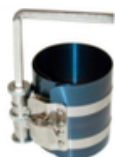
**MAGNET PULLER**

SPECIAL CNC HANDLE TYPE DOUBLE THREAD

SIZE	PRICE
HERO HONDA, BAJAJ,ACTIVA, STAR CUTY, TVS SCOOTY,PLATINA,BOXER,ETERNO, PASSIO,KALIBER,VICTOR,PULSAR, FREEDON,,DISCOVER,HUNK,UNIC ORN,ACHIEVER	330.00
10 IN 1	840.00

**CODE NQ739**

HSN CODE: 82033000



**PISTON RING COMPRESSOR**

DESCRIPTION	PRICE
RC-3	350.00
RC-4	380.00
RC-5	1010.00

**CODE NQ 740**

HSN CODE: 82033000



**ROUND PLATE JACK STAND**

SIZE	PRICE
3 LEG	700.00

**CODE NQ 741**

HSN CODE: 82033000



**JACK STAND**

SIZE	PRICE
4 LEG	860.00

**CODE NQ742**

HSN CODE: 82055990



**OIL FILTER WRENCH**

SIZE	PRICE
57-73	220.00
65-83	220.00
75-95	230.00
92-111	240.00

**CODE NQ743**

HSN CODE: 82055990



**FILTER WRENCH DROP FORGED**

SIZE	PRICE
60X140	380.00

**CODE NQ744**

HSN CODE: 82055990



**STRAP WRENCH**

SIZE	PRICE
60X200	510.00

**CODE NQ745**

HSN CODE: 82055990



**OIL FILTER WRENCH CHAIN TYPE**

SIZE	PRICE
60X140	350.00

**CODE NQ746**

HSN CODE: 82055990



**REVERSIBLE RATCHET HANDLE**

SIZE IN SQ. DRV.	PRICE
1/4	820.00
1/2	900.00

**CODE NQ747**

HSN CODE: 82055990



**T-SPANNER**

METRIC MM	PRICE	PRICE DEEP SOCKET
7	160.00	220.00
8	160.00	220.00
9	170.00	240.00
10	170.00	240.00
11	180.00	260.00
12	190.00	260.00
13	190.00	260.00
14	200.00	290.00

**CODE NO. 748**

HSN CODE: 82033000



**PISTON RING EXPANDER REMOVER**

SIZE	PRICE
STANDARD	1500.00

**CODE NO. 749**

HSN CODE: 82033000



**PISTON RING GROOVE CLEANER**

SIZE	PRICE
STANDARD	1800.00

**CODE NO. 750**

HSN CODE: 82033000



**SILICON GREASE GUN**

DESCRIPTION	PRICE
COMMERCIAL	250.00
HEAVY DUTY	310.00

**CODE NO. 751**

HSN CODE: 84139190



**BARREL PUMP**

SIZE	PRICE
95MM	1760.00
100MM	1940.00

**CODE NO. 752**

HSN CODE: 82055190



**OIL CAN**

SIZE	PRICE
1/2	160.00
3/4	180.00

**CODE NO. 753**

HSN CODE: 82055190



**GREASE GUN**

SIZE	PRICE
8 OZ	510.00
10 OZ	580.00
15 OZ	800.00

**CODE NO. 754**

HSN CODE: 84133110



**GREASE BUCKET**

WITH WHEELS / WITHOUT WHEELS

SIZE	PRICE
5 KGS WITH WHEEL	6400.00
10 KGS WITH WHEEL	7000.00
5 KGS W/O WHEEL	5900.00
10 KGS W/O WHEEL	6200.00

**CODE NO. 755**

HSN CODE: 87149990



**CLUTCH NUT**

DESCRIPTION	PRICE
PULSAR, STAR CITY, HERO HONDA, SPLENDOR	100.00

**CODE NO. 756**

HSN CODE: 82079090



**CLUTCH HOLDER**

DESCRIPTION	PRICE
HERO HONDA 4PIN,BAJAJ 6 PIN,PULSAR 4 PIN,PULSAR 5 PIN,PULSAR 6 PIN,YAMAHA RING TYPE,BELLET 6 PIN,BAJAJ 80LID,S.SPLENDOR 3PIN,S.SPLENDOR 6PIN	220.00

**CODE NO. 757**

HSN CODE: 82033000



**HEAD SPANNER**

DESCRIPTION	PRICE
17 MM	80.00

**CODE NO. 758**

HSN CODE: 82079090



**SHOCKER PULLER**

DESCRIPTION	PRICE
HONDA LIGHT	250.00
HONDA HEAVY	450.00
FZ	560.00
MARUTI-2SET(B)	1060.00

**CODE NO. 759**

HSN CODE: 82079090



**TAPPET KEY**

DESCRIPTION	PRICE
L TYPE	70.00
T TYPE,PLASTIC HANDLE,KNURLING	60.00
TWO IN ONE L TYPE	80.00

**CODE NQ760**

HSN CODE: 82033000



**VALVE PULLER**

DESCRIPTION	PRICE
SQUARE HEAVY	560.00
SQUARE LIGHT	470.00

**CODE NQ761**

HSN CODE: 82033000



**MAGNET PULLER**

DESCRIPTION	PRICE
HERO HONDA	180.00
UNIVERSAL HEAVY - PULSAR	510.00

**CODE NQ762**

HSN CODE: 82033000



**TIMING PULLER-PULSAR**

DESCRIPTION	PRICE
2 PCS SET -9 JAW HEAVY	400.00
2PCS SET -3 JAW HEAVY	400.00

**CODE NQ763**

HSN CODE: 82033000



**FOOT OPERATED AIR PUMP**

DESCRIPTION	PRICE
FOR BIKE & CARS	1500.00
SPARE FOOT PUMP KIT+SPRING	120.00

**CODE NQ764**

HSN CODE: 82059090



**MULTI PURPOSE TOOL BOX**

SIZE	NO. OF TRAYS	PRICE
16X8X6	3	1580.00
16X8X8	5	1920.00
21X8X6	3	2070.00
21X8X8	5	2560.00
24X8X8	5	3740.00

**CODE NQ765**

HSN CODE: 82059090



**SINGLE COMPARTMENT TOOL BOX/WITH WHEELS**

SIZE	WITH WHEELS	PRICE
14X6X6	-----	1140.00
916x233x260	4	17600.00

**CODE NQ766**

HSN CODE: 82059090



**TOOL TROLLEY**

SIZE	NO. OF DRAWER	PRICE
480X520X780	5	37620.00
480X520X935	7	51480.00

**CODE NQ767**

HSN CODE: 82033000



**L-HANDLE**

SIZE	PRICE
1/2X8	220.00
1/2X10	250.00
1/2X12	360.00
1/2X18	670.00
3/4X18	950.00

**CODE NQ768**

HSN CODE: 82033000



**T-HANDLE**

SIZE	PRICE
1/2X12	440.00
3/4X20	1100.00

**CODE NQ769**

HSN CODE: 82033000



**EXTENSION BAR**

SIZE	PRICE
1/2X3	740.00
1/2X5	220.00
1/2X10	310.00
3/4X6	490.00
3/4X8	600.00
3/4X16	1080.00

**CODE NQ770**

HSN CODE: 82033000



**TYRE LEVER FLAT**

SIZE	PRICE
18"	260.00
20"	330.00
24"	380.00
30"	450.00



# PUNCHES & CHISEL'S

**CODE NQ771**

HSN CODE: 82079090



**BELT PUNCH**

NO./MM	PRICE	NO./MM	PRICE
1	40.00	32	230.00
2	40.00	34	400.00
4	40.00	36	400.00
5	40.00	38	600.00
6	40.00	40	600.00
8	40.00	42	600.00
10	40.00	44	600.00
12	42.00	46	710.00
14	60.00	48	710.00
16	80.00	50	1040.00
18	90.00	52	1040.00
20	100.00	54	1040.00
22	130.00	56	1040.00
24	130.00	58	1260.00
26	200.00	60	1260.00
28	200.00	62	1260.00
30	230.00	64	1260.00

**CODE NQ774**

HSN CODE: 82033000



**CHISEL FLAT DROP FORGED**

SIZE	PRICE
6	120.00
8	190.00
10	210.00
12	250.00

**CODE NQ775**

HSN CODE: 82033000



**BRICK BLOSTER CHISEL**

SIZE	PRICE
2.1/4	290.00
3	420.00
4	530.00

**CODE NQ776**

HSN CODE: 82033000



**COLD CHISEL**

DESCRIPTION	SIZE	PRICE
CROSS CUT	3/8X6	80.00
DIAMOND CUT	3/8X6	80.00
ROUND CUT	3/8X6	80.00

**CODE NQ772/772H**

HSN CODE: 82079090



**BELT PUNCH KIT**



SIZE	PRICE	TAPARIA TYPE
4-20	620.00	----
4-24	730.00	----
4-32	1060.00	1380.00



**CODE NQ777**

HSN CODE: 82055990



**NAIL PULLER**

SIZE	PRICE
STANDARD	220.00

**CODE NQ.773**

HSN CODE: 82033000



**FLAT OCTANGAL CHISEL**

SIZE	PRICE	SIZE	PRICE
3/8X3"	50.00	3/4X4"	100.00
3/8X4"	60.00	3/4X6"	140.00
3/8X6"	50.00	3/4X8"	170.00
1/2X4"	70.00	3/4X10"	200.00
1/2X6"	90.00	3/4X12"	230.00
1/2X8"	100.00	1X6"	120.00
5/8X4"	82.00	1X8"	270.00
5/8X6"	110.00	1X10"	340.00
5/8X8"	130.00	1X12"	400.00
5/8X10"	160.00		
5/8X12"	190.00		

**CODE NQ778**

HSN CODE: 82055990



**SPEED BRACE SWIVEL HANDLE**

SIZE	PRICE
1/2X250	630.00
1/2X380	950.00
1/2X500	1270.00

**CODE NQ779**

HSN CODE: 82079090



**COPPER BIT SOLDERING IRON**

SIZE	PRICE
25WATT.	250.00
60WATT.	540.00
120WATT.	1020.00

**CODE NQ780**

HSN CODE: 82079090



**BAR BENDER TOOL**

SIZE	PRICE
6	160.00
8	220.00
10	360.00
12	690.00
16	1010.00
20	1210.00
25	1430.00

**CODE NQ 785**

HSN CODE: 82041120



**ALLEN KEY**

SIZE IN MM	PRICE CRV	EN-8 PRICE	SIZE IN MM	PRICE CRV	EN-8 PRICE
1.5-3	7.00	5.00	22	800.00	560.00
4	12.00	8.00	24	1066.00	810.00
5	16.00	11.00	27	1560.00	
6	26.00	17.50	30	2160.00	----
7-8	54.00	32.00	32	2780.00	----
9	84.00	-----	36	3760.00	----
10	88.00	62.00			-----
11	126.00	----			
12	146.00	102.00			
14	214.00	154.00			
17	380.00	262.00			
19	510.00	368.00			

**CODE NQ781**

HSN CODE: 82057000



**WRECKING BAR /CROW BAR**

SIZE	PRICE
25X18	380.00
28X18	400.00
30X18	430.00
25X24	500.00
28X24	530.00
30X24	600.00

**CODE NQ782**

HSN CODE: 82054000



**RAWAL BIT & HOLDER**

SIZE	PRICE
NO.8	90.00
NO.10	90.00
NO. 12	100.00
NO. 14	100.00

**CODE NQ786**

HSN CODE: 82041120



**ALLEN KEY SET**

SIZE IN MM	PRICE CRV	EN-8 PRICE
1.5-10	264.00	180.00
1.5-12	536.00	408.00
1.5-14	750.00	562.00

**CODE NQ783**

HSN CODE: 82032000



**TWEEZERS**

DESCRIPTION	PRICE
STANDARD	80.00

**CODE NQ787**

HSN CODE: 82041120



**T-ALLEN KEY**

SIZE IN MM	PRICE
2	70.00
2.5	80.00
3	90.00
4	100.00
5	110.00
6	150.00
8	190.00
10	240.00

**CODE NQ784**

HSN CODE: 82032000



**DRIFT PUNCH COPPER**

SIZE IN INCHES	PRICE
1/2X6"	1780.00
1/2X8"	2400.00

**CODE NQ788**

HSN CODE: 84661010



**DRILL CHUCK WITH KEY/KEYLESS  
DRILL CHUCK**

SIZE IN INCHES	PRICE	KEYLESS
1/2	840.00	3060.00

**CODE NO. 789**

HSN CODE: 84661010



**TOOL POST KEY T-TYPE**

SIZE IN INCHES	PRICE
5/16"	150.00
3/8"	160.00
7/16"	180.00
1/2"	240.00
5/8"	270.00
3/4"	330.00

**CODE NO. 794**

HSN CODE: 84818030



**GAS CYLINDER KEY**

CARBON STEEL (BRIGHT)

SIZE IN MM	PRICE
8X8	100.00
8X10	100.00
10X10	100.00

**CODE NO. 790**

HSN CODE: 82054000



**PRECISION SCREW DRIVER SET**

SIZE	PRICE
SET OF 6	450.00

**CODE NO. 795L/795F**

HSN CODE: 82034010



**LETTER /FIGURE SET DOTTED**

SIZE IN INCHES	SIZE IN MM	LETTER SET	FIG. SET
3/32"	2.5	1920.00	640.00
1/8"	3	2510.00	840.00
5/32"	4	3040.00	1010.00
3/16"	5	3300.00	1100.00
1/4"	6	3960.00	1320.00
5/16"	8	5880.00	1960.00
3/8"	10	9500.00	3170.00
1/2"	12	13400.00	4470.00

**CODE NO. 791**

HSN CODE: 846789



**CRIMPING TOOL**

SIZE	PRICE
100MM	1020.00
7 IN 1	1460.00
1.5SQ-16SQ	1480.00
16SQ-95SQ	6300.00

**CODE NO. 796L/796F**

HSN CODE: 82034010



**LETTER /FIGURE SET REVERSE**

SIZE IN INCHES	SIZE IN MM	LETTER SET	FIG. SET
3/32"	2.5	530.00	180.00
1/8"	3	530.00	180.00
5/32"	4	660.00	220.00
3/16"	5	990.00	330.00
1/4"	6	1320.00	440.00
5/16"	8	1650.00	550.00
3/8"	10	2840.00	950.00

**CODE NO. 792**

HSN CODE: 82079090



**CENTRE PUNCH KNURLING**

SIZE IN INCHES	PRICE
3/8X4"	40.00
3/8X5"	50.00
3/8X6"	50.00
1/2X4"	60.00
1/2X5"	60.00
1/2X6"	62.00
1/2X8"	70.00

**CODE NO. 793**

HSN CODE: 84639010



**RIVET GUN**

SIZE	PRICE
STANDARD	2640.00

**CODE NO. 797**

HSN CODE: 85159099



**GAS WELDING TORCH WITH NOZZLES**

SIZE	PRICE
STANDARD	4200.00

CODE NQ 798T

**TAP & DIE SET**

HSN CODE: 82074090



SIZE	PRICE
1/4,5/16,3/8,7/16,1/2 BSW	4690.00
1/4,5/16,3/8,7/16,1/2 BFS	4690.00
1/4,5/16,3/8,7/16,1/2 UNF	4690.00
1/4,5/16,3/8,7/16,1/2,5/8,3/4 BSW	7200.00
1/4,5/16,3/8,7/16,1/2,5/8,3/4 BSF	7200.00
1/4,5/16,3/8,7/16,1/2,5/8,3/4 UNF	7200.00
1/4,5/16,3/8,7/16,1/2,5/8,3/4,7/8,1 BSW	12400.00
1/4,5/16,3/8,7/16,1/2,5/8,3/4,7/8,1 BSF	12400.00
1/4,5/16,3/8,7/16,1/2,5/8,3/4,7/8,1 UNF	12400.00
1/4,5/16,3/8,7/16,1/2,5/8,3/4,7/8,1 1.1/4 BSW	18580.00
1/4,5/16,3/8,7/16,1/2,5/8,3/4,7/8,1 1.1/4,1.1/2 BSW	24230.00

SIZE	PRICE
2,3,4,5,6 MM (DIN)	3000.00
2,3,4,5,6,7,8,9,10 MM (S.I.)	4940.00
3,4,5,6,7,8,9,10,12 MM (S.I.)	5060.00
6,7,8,10,12 MM (S.I.)	4560.00
6,8,10,12,14,16,18 MM (S.I.)	7140.00
6,8,10,12,14,16,18,20 MM (S.I.)	8250.00
6,8,10,12,14,16,18,20,22,24 MM (S.I.)	13640.00
0,1,2,3,4,5,6,7,8,9,10 MM (B.A)	5280.00
1/8,1/4,3/8,1/2,3/4,1 BSP	12180.00
1/8,1/4,3/8,1/2,3/4,1,1.1/4 BSP	15880.00
1/8,1/4,3/8,1/2,3/4,1,1.1/4,1.1/2 BSP	20390.00
1/8,1/4,3/8,1/2,3/4,1 NPT	13930.00
1/8,1/4,3/8,1/2,3/4,1,1.1/4 NPT	20460.00
1/8,1/4,3/8,1/2,3/4,1,1.1/4,1.1/2 NPT	26400.00



## TERMS & CONDITIONS

- 1.This Price mentioned in Price List are F.O.R. Jalandhar in standard packing.
- 2.These prices are exclusive of GST & Other Taxes as applicable at the time of dispatch, will be charged extra.
- 3.Illustrations and pictures in this price list as true as possible, but not binding.
- 4.All payments even advance should be made direct to the company through demand draft, RTGS company will not be responsible for any payment made to agent or representative.
- 5.Incase of any disputes, Jurisdiction Jalandhar Courts.
- 6.This cancels our Previous Price List.
- 7.The Prices and specification are subject to change without any prior notice.
8. Any complaint with respect to shortage to be lodged within 10 days of receipt of goods, therefore complaints lodged will be treated as null & void. Shortage complaints will not be entertained without shortage certificate from the transporter.

## WARRANTY

**We therefore undertake to replace any piece of HUGO Tools & Vices in case of any Manufacturing Defect provided the same is returned to us without misuse and careless handling.**



**M/S AMBAY TOOLS CO. (INDIA)**



**Jalandhar-144004 (India)**



**oscarambay@yahoo.co.in**



**www.hugotools.com**

AUTHORIZED STOCKLIST

